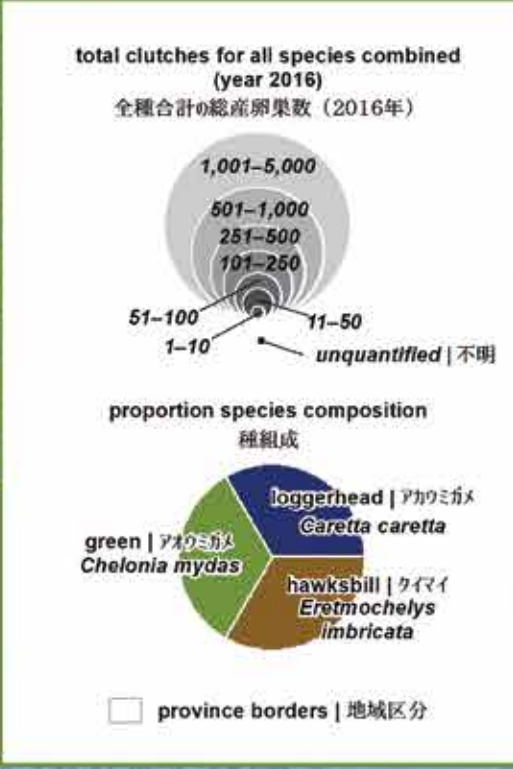
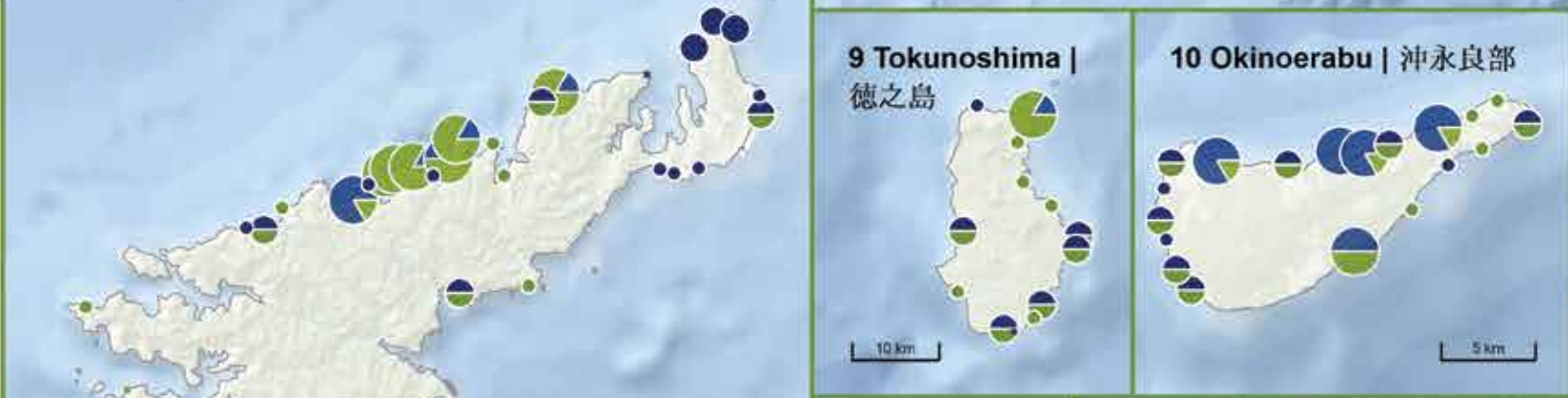
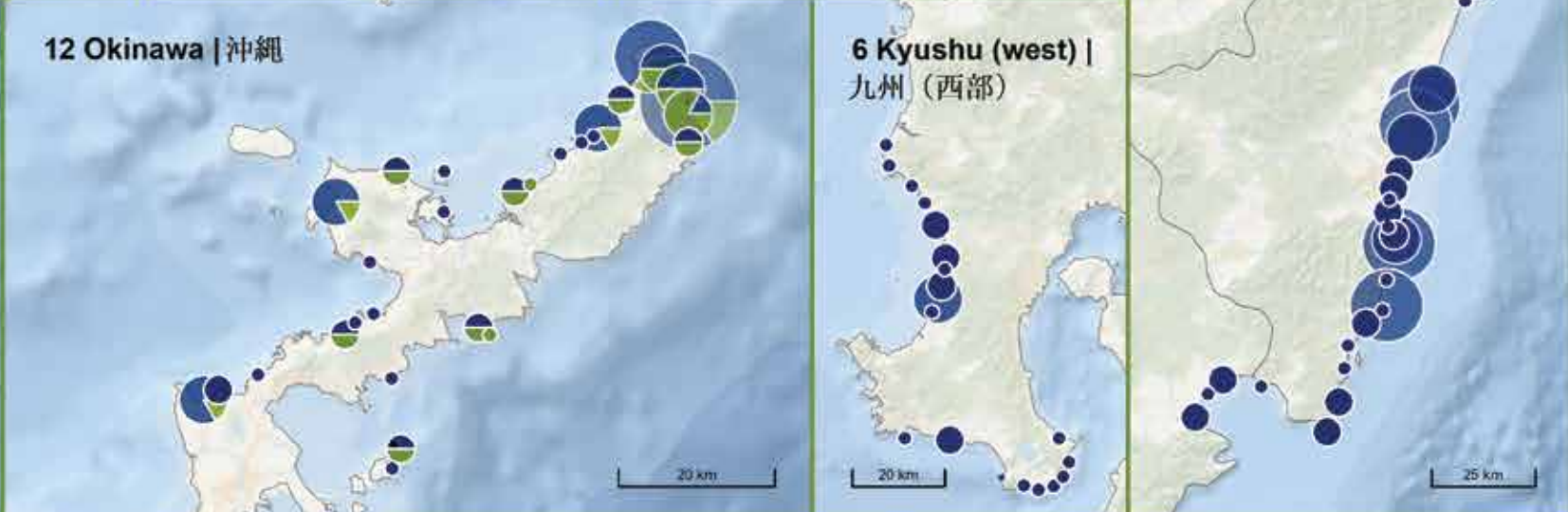
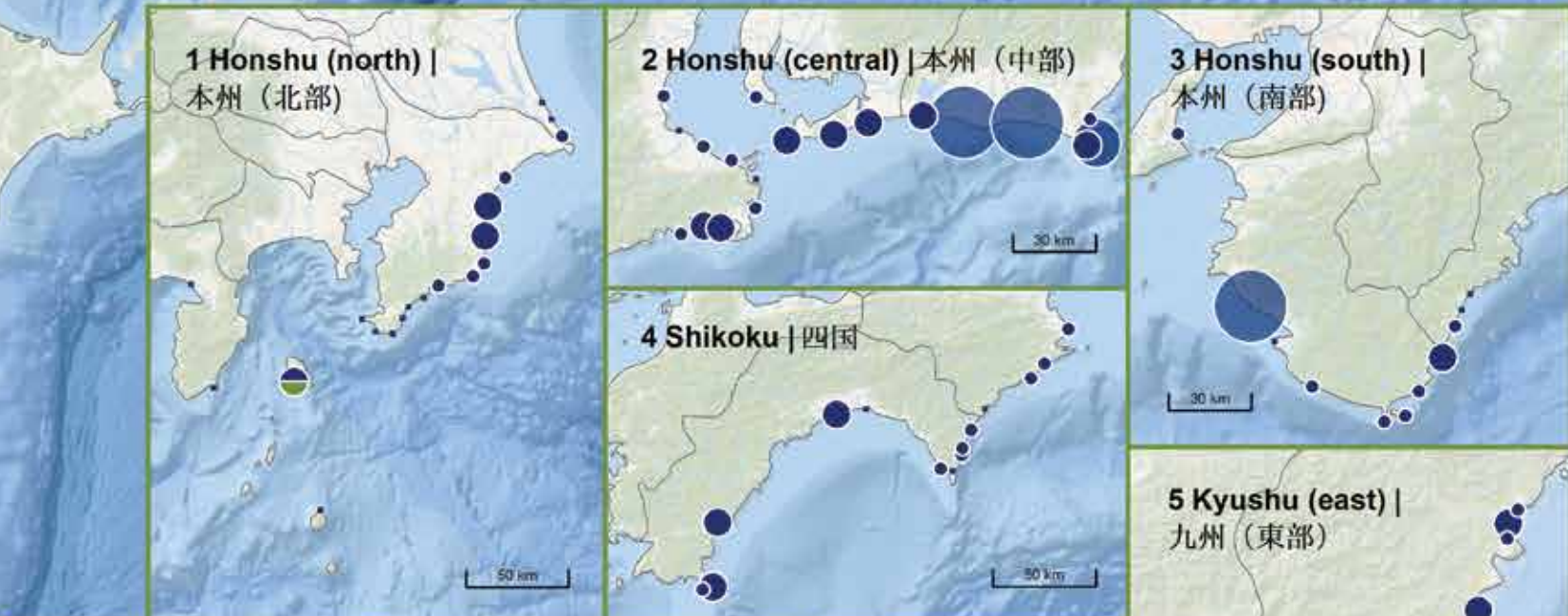
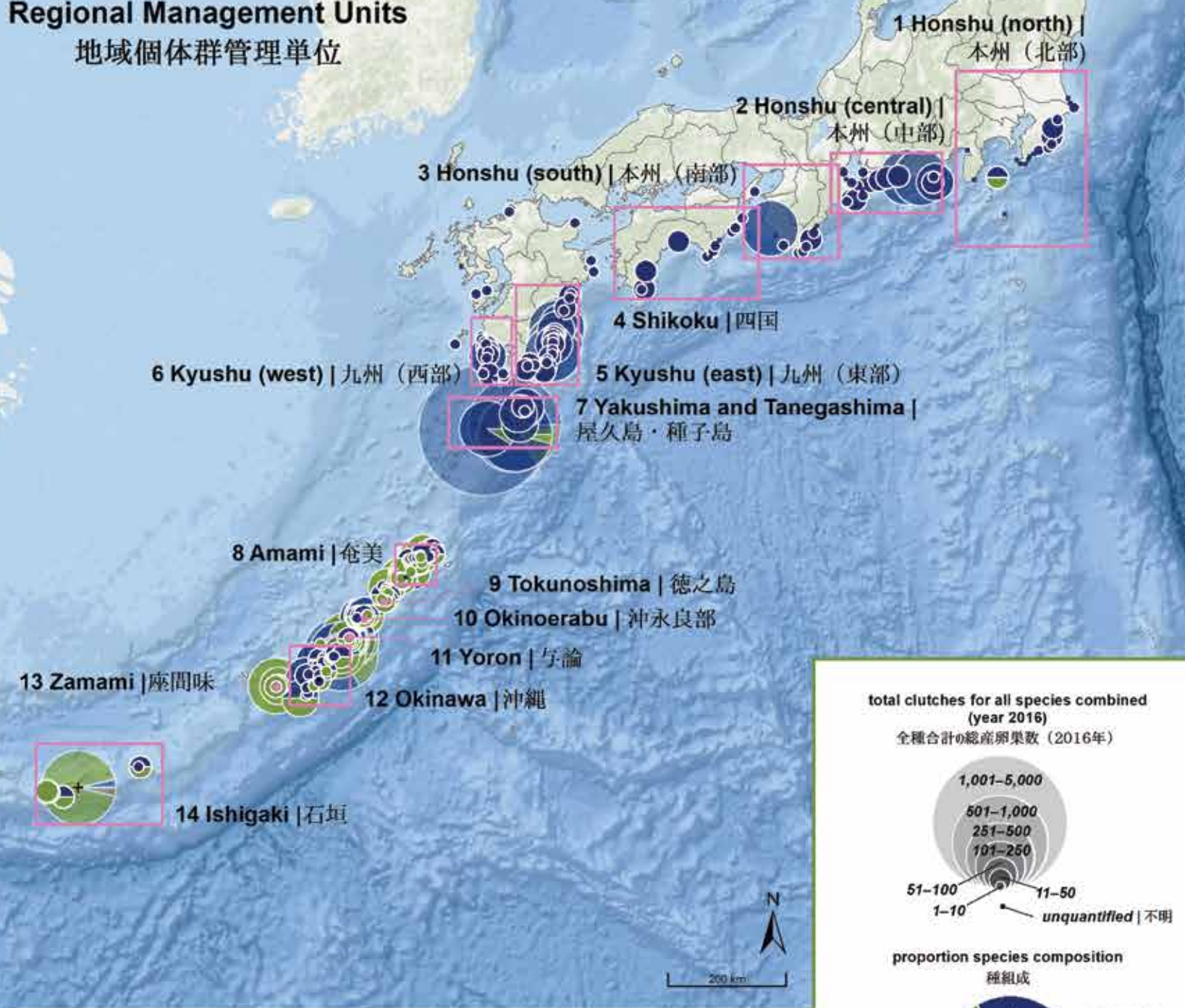


# Nesting Biogeography of Sea Turtles in Japan

## 日本におけるウミガメ産卵地の分布

### Regional Management Units

#### 地域個体群管理単位



scale: 1:9,000,000

projection: JGD 2011 Japan Zone 10

data: Data were digitized with permission from Figures 1 and 2 in: Matsuzawa, Y. (editor), Proceedings of 27th Japanese Sea Turtle Symposium in Muroto (2016). Sea Turtle Association of Japan: Osaka, Japan. See end of report for a complete list of data contributors; Ocean Basemap — Esri, DeLorme, GEBCO, NOAA NGDC, and other contributors; boundary data — Esri Maps and Data for ArcGIS 2016.

notes: When multiple species may nest at an unquantified site, the site is colored black; species that comprise less than 5% of the clutches at nesting sites are not displayed on the map.

produced in partnership with: Oceanic Society, Duke University, OBIS-SEAMAP, IUCN-MTSG, and the Sea Turtle Association of Japan.