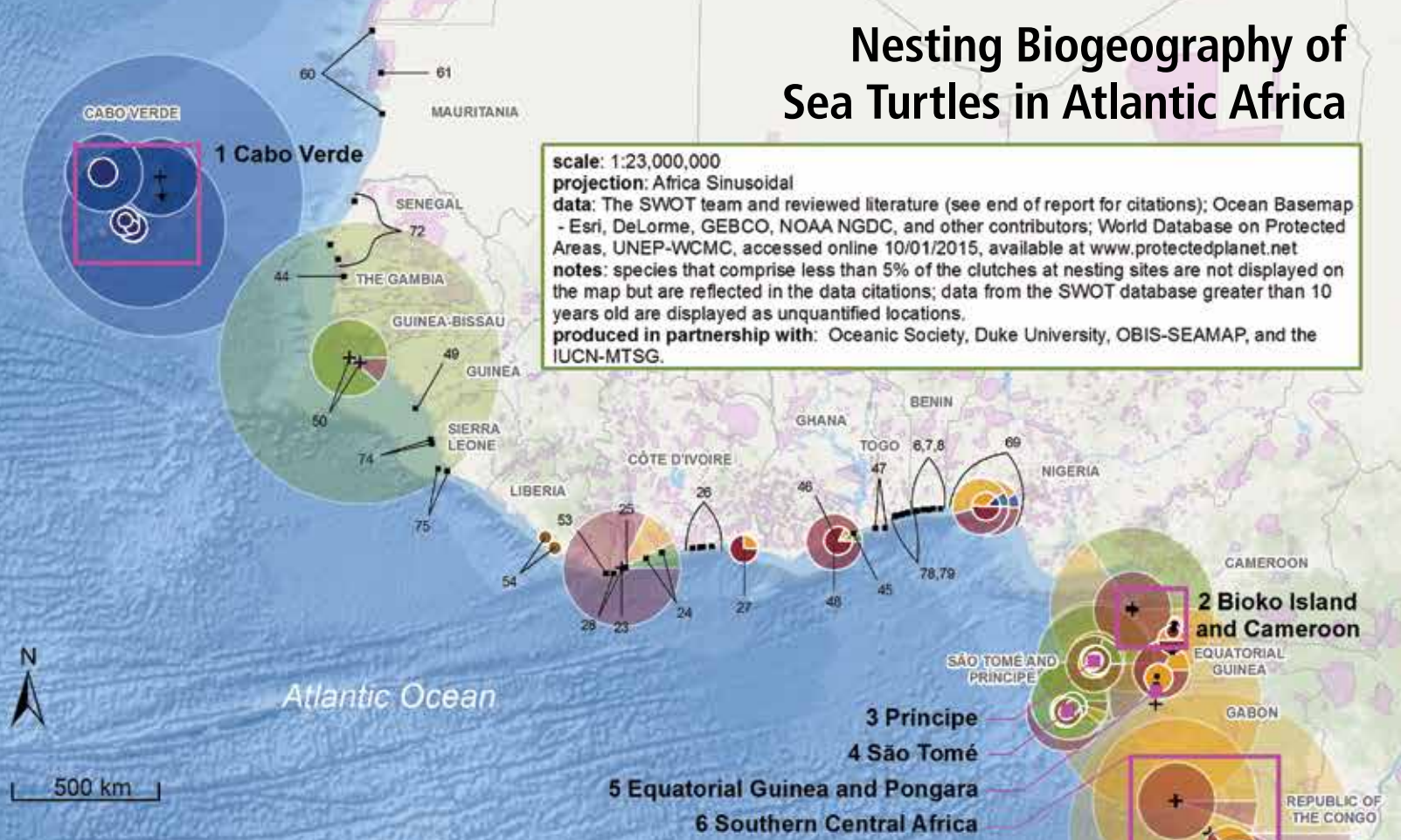
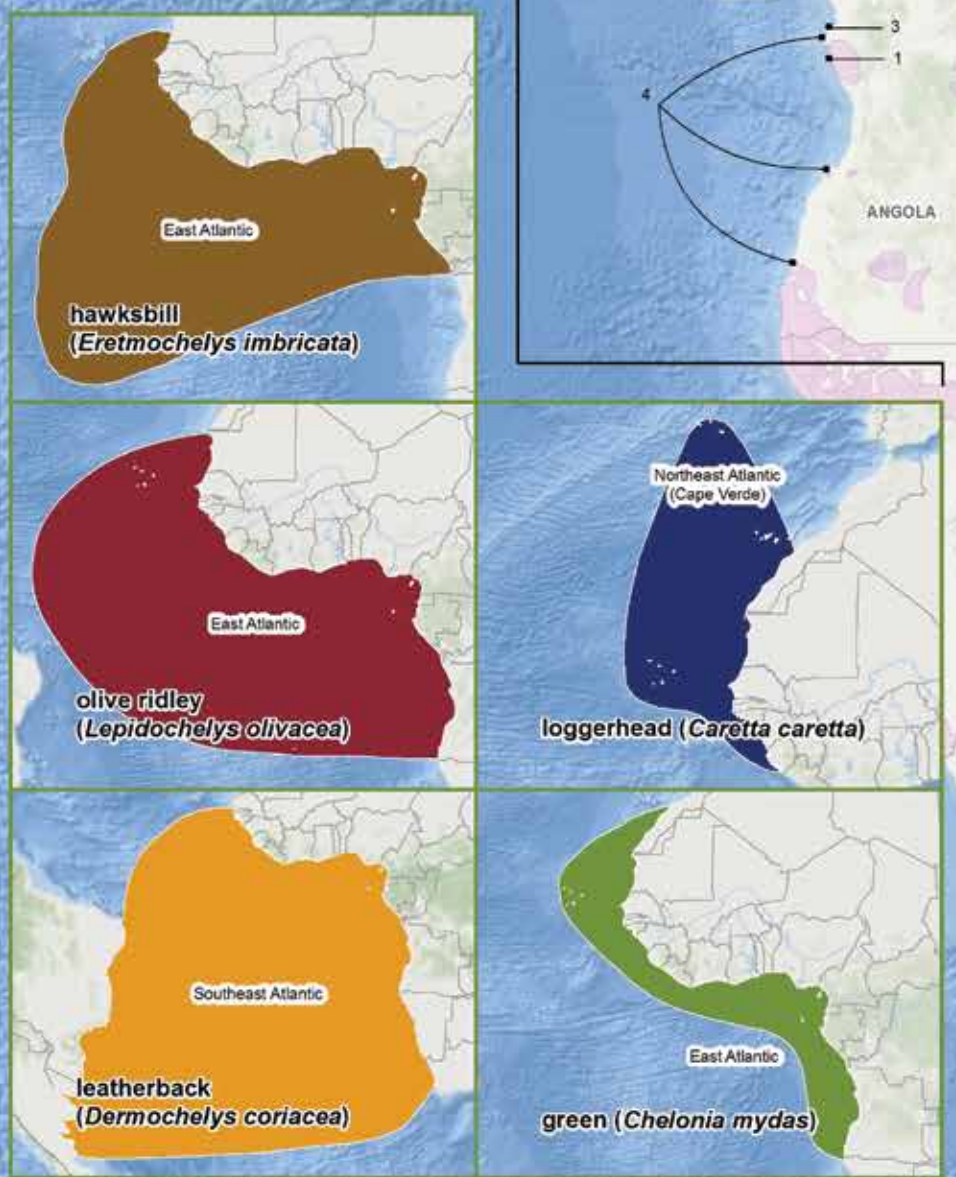


Nesting Biogeography of Sea Turtles in Atlantic Africa

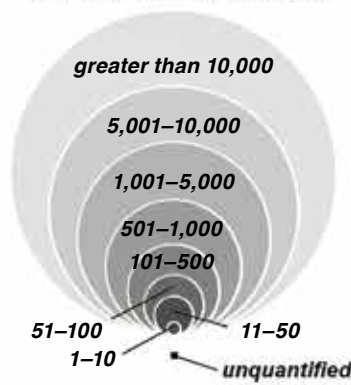


scale: 1:23,000,000
 projection: Africa Sinusoidal
 data: The SWOT team and reviewed literature (see end of report for citations); Ocean Basemap - Esri, DeLorme, GEBCO, NOAA NGDC, and other contributors; World Database on Protected Areas, UNEP-WCMC, accessed online 10/01/2015, available at www.protectedplanet.net
 notes: species that comprise less than 5% of the clutches at nesting sites are not displayed on the map but are reflected in the data citations; data from the SWOT database greater than 10 years old are displayed as unquantified locations.
 produced in partnership with: Oceanic Society, Duke University, OBIS-SEAMAP, and the IUCN-MTSG.

Regional Management Units [West Africa]



total clutches for all species combined
 (most recently available year)



proportion species composition*



protected areas
 — country borders

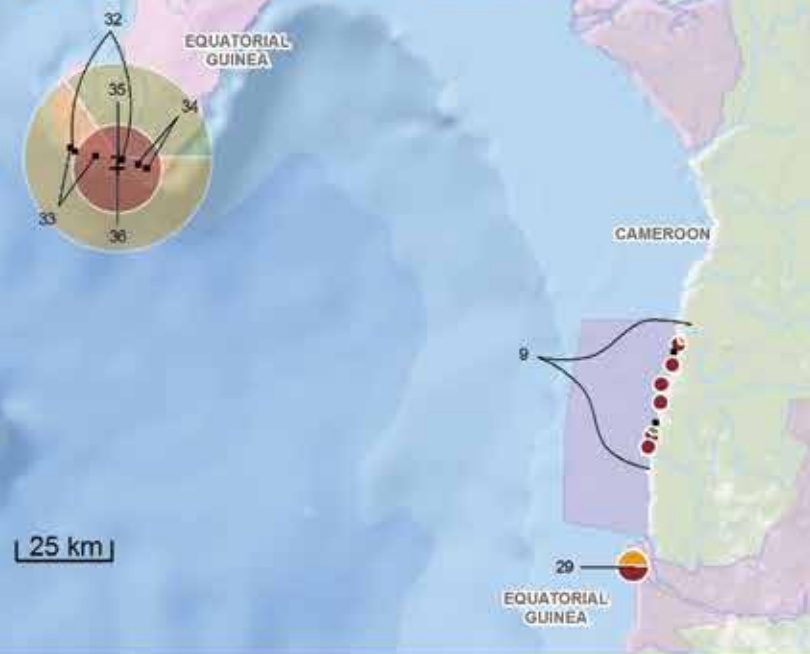
main map extents



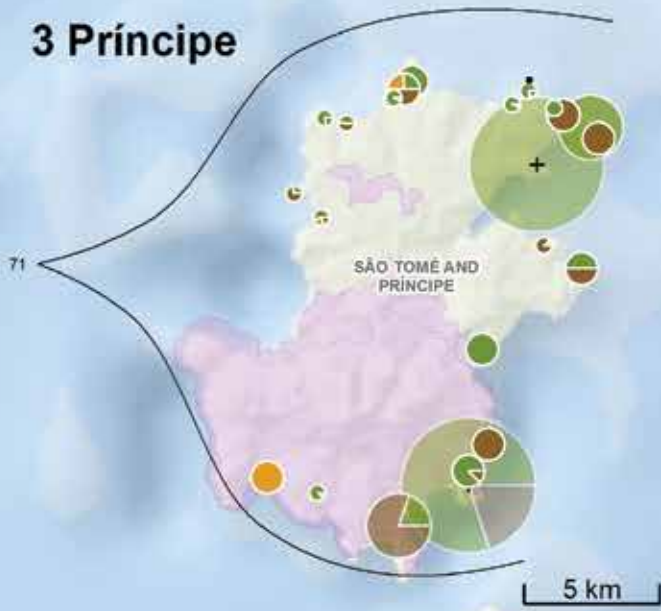
1 Cabo Verde



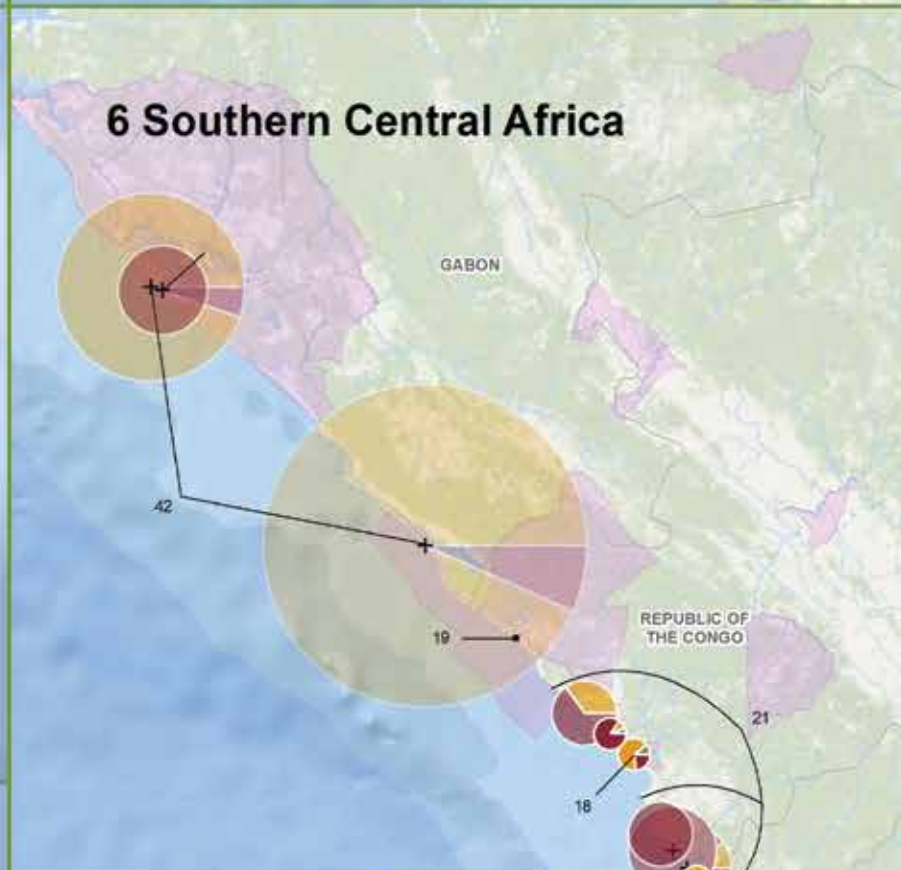
2 Bioko Island and Cameroon



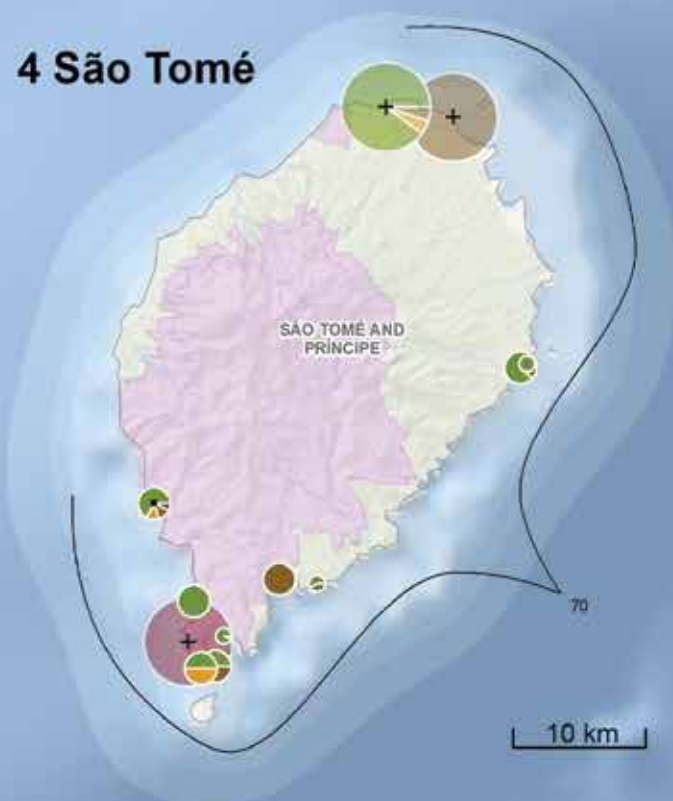
3 Príncipe



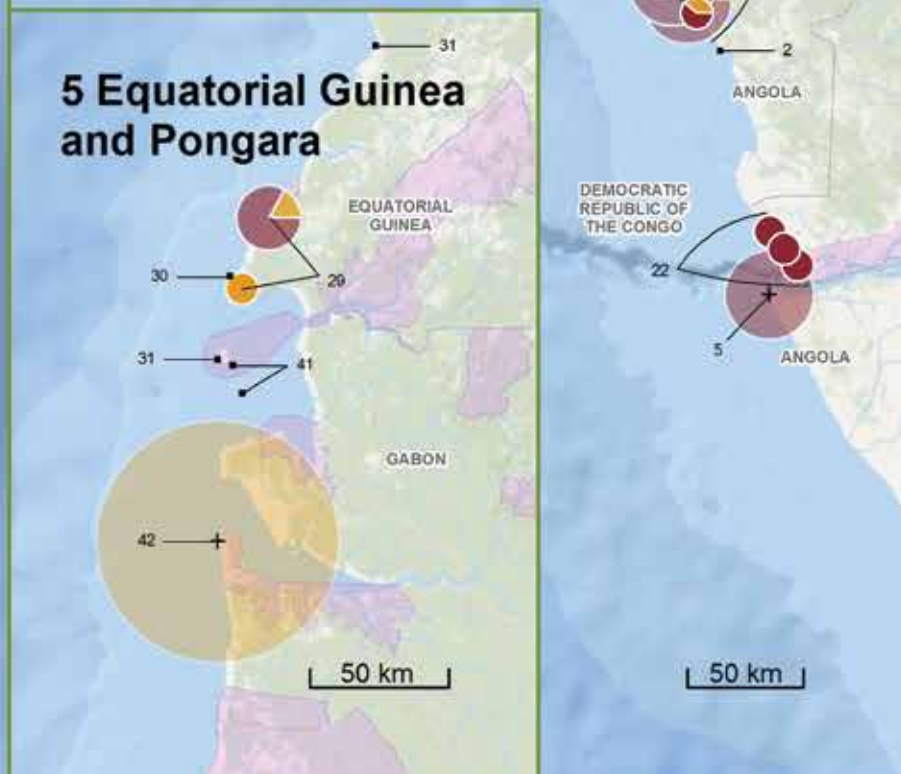
6 Southern Central Africa



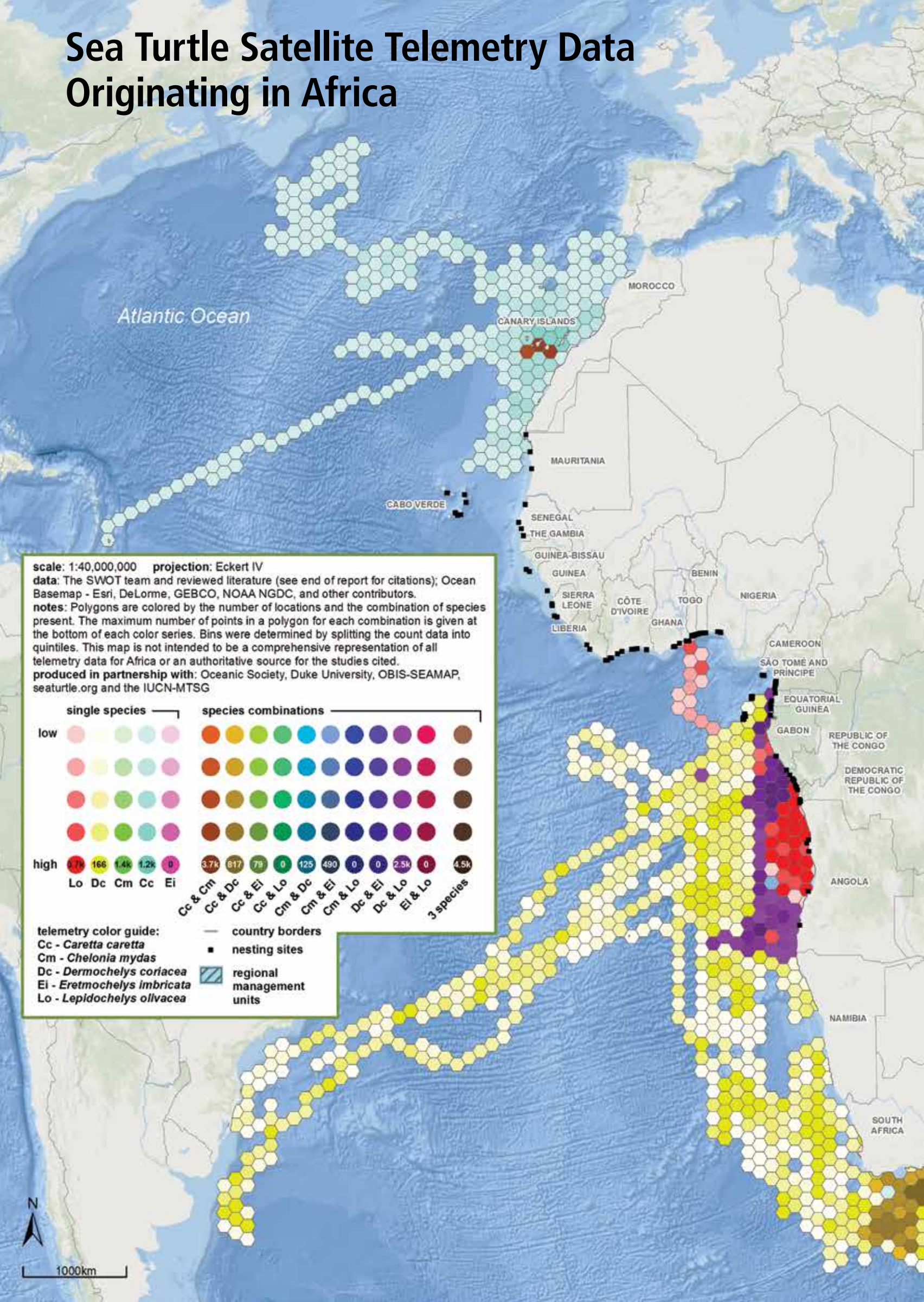
4 São Tomé



5 Equatorial Guinea and Pongara



Sea Turtle Satellite Telemetry Data Originating in Africa



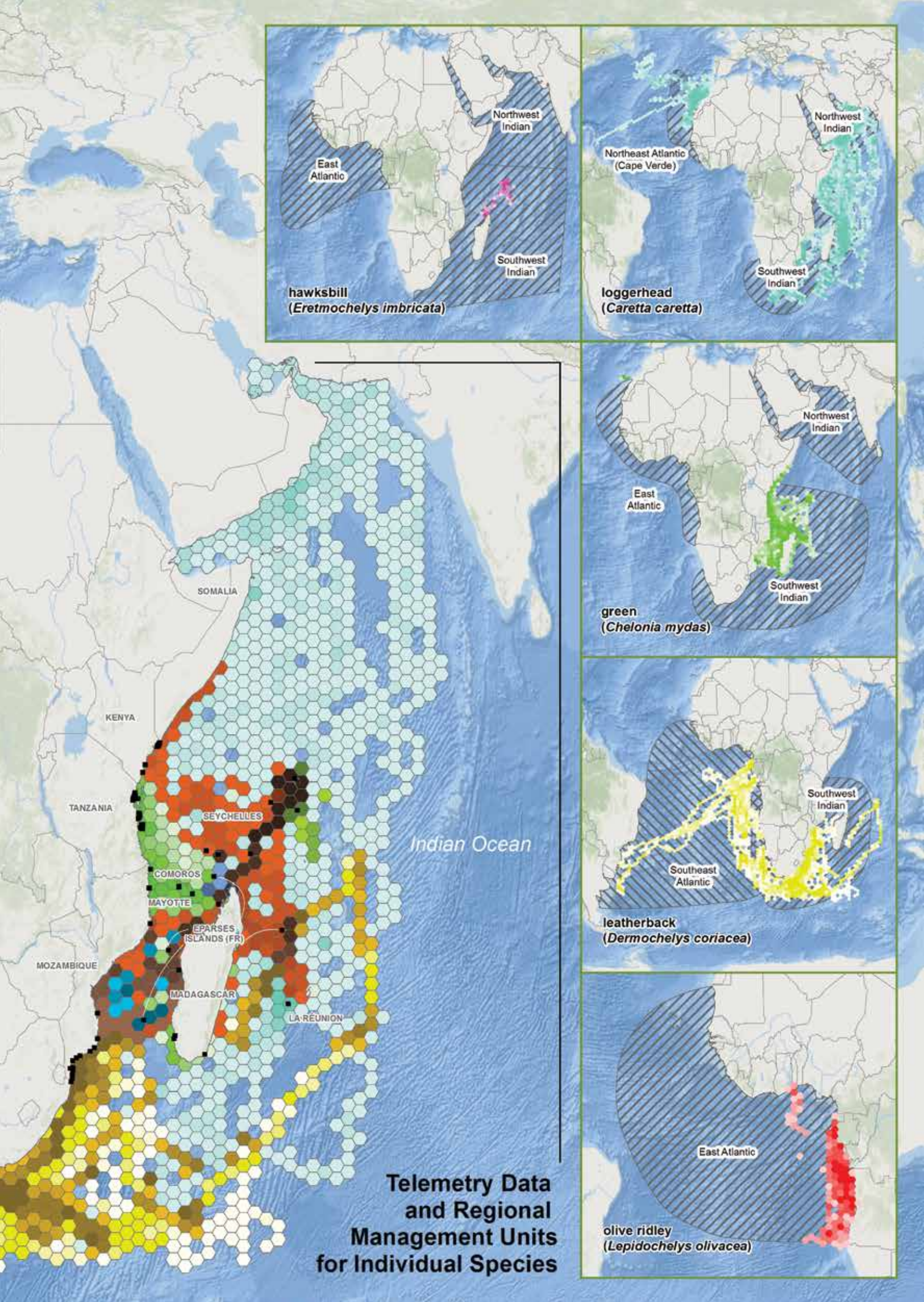
scale: 1:40,000,000 projection: Eckert IV
 data: The SWOT team and reviewed literature (see end of report for citations); Ocean Basemap - Esri, DeLorme, GEBCO, NOAA NGDC, and other contributors.
 notes: Polygons are colored by the number of locations and the combination of species present. The maximum number of points in a polygon for each combination is given at the bottom of each color series. Bins were determined by splitting the count data into quintiles. This map is not intended to be a comprehensive representation of all telemetry data for Africa or an authoritative source for the studies cited.
 produced in partnership with: Oceanic Society, Duke University, OBIS-SEAMAP, seaturtle.org and the IUCN-MTSG

single species					species combinations											
low																
high																
	Lo	Dc	Cm	Cc	Ei	Cc & Cm	Cc & Dc	Cc & Ei	Cc & Lo	Cm & Dc	Cm & Ei	Cm & Lo	Dc & Ei	Dc & Lo	Ei & Lo	3 species
	1.7k	166	1.4k	1.2k	0	3.7k	817	79	0	125	490	0	0	2.5k	0	4.5k

telemetry color guide:
 Cc - *Caretta caretta*
 Cm - *Chelonia mydas*
 Dc - *Dermochelys coriacea*
 Ei - *Eretmochelys imbricata*
 Lo - *Lepidochelys olivacea*

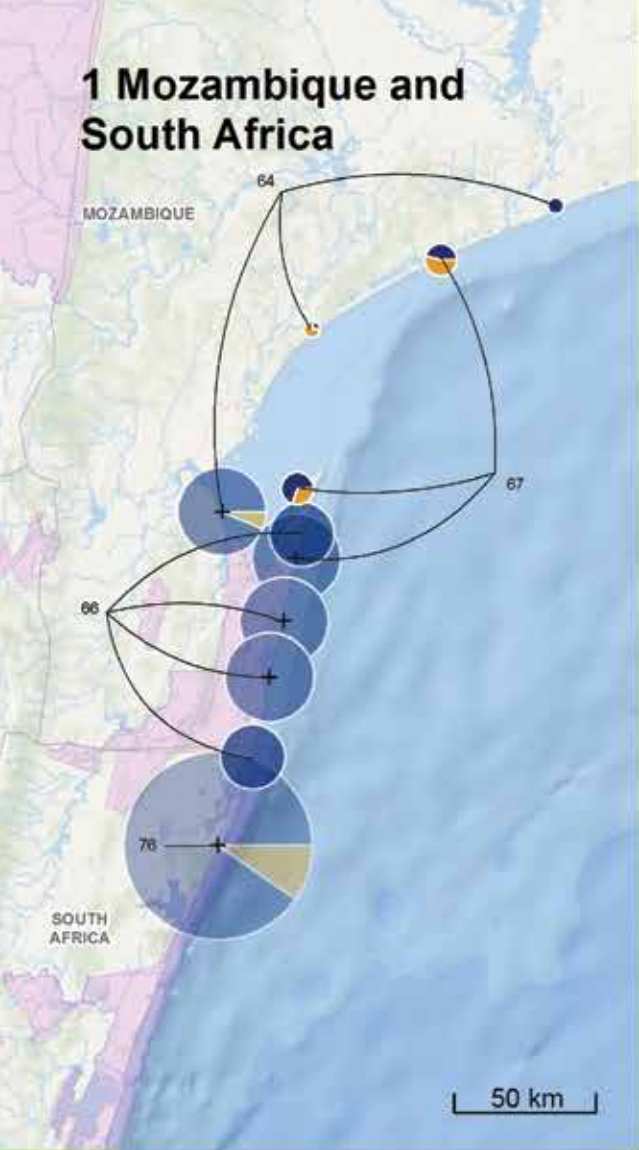
— country borders
 ■ nesting sites
 regional management units



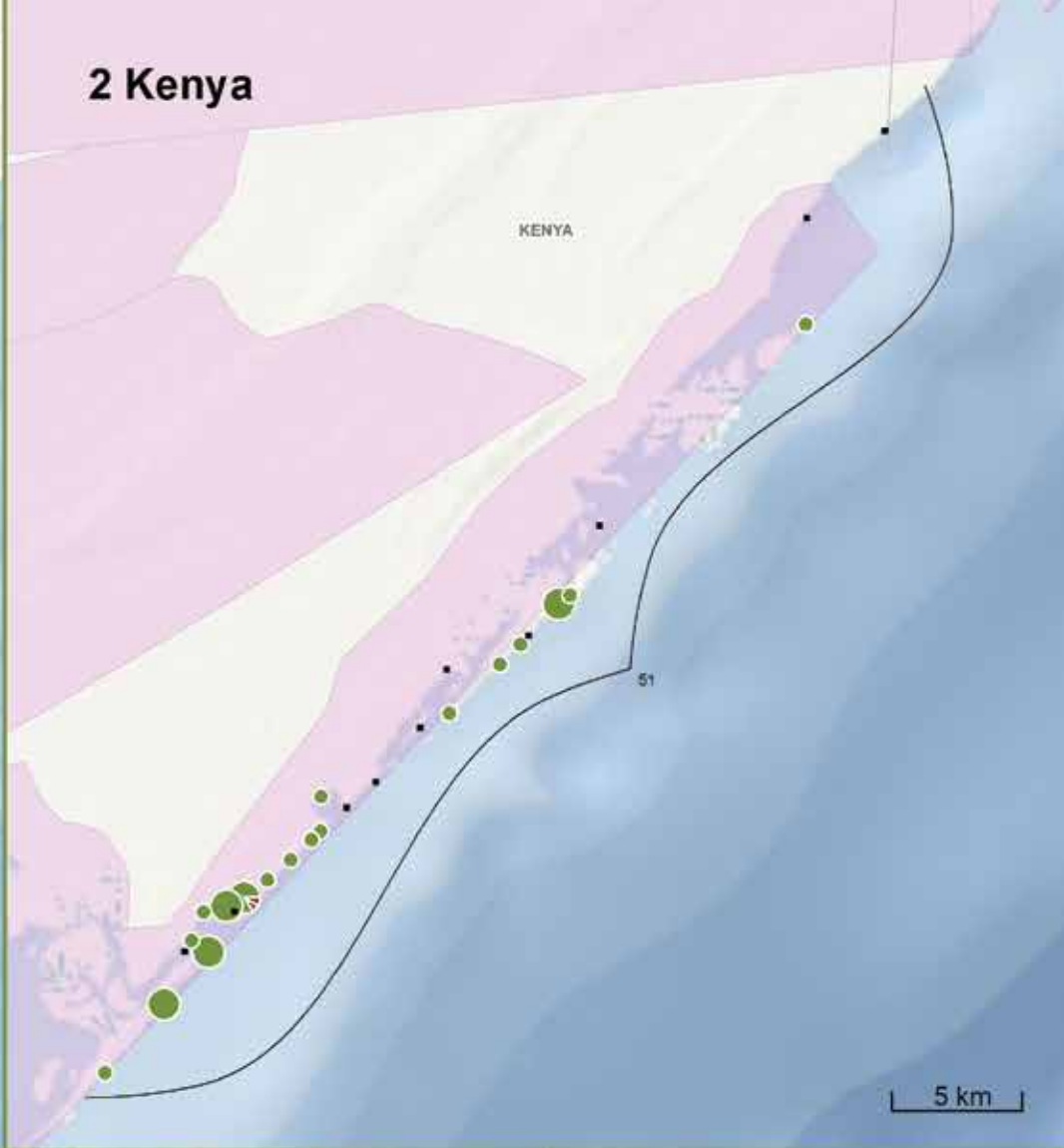


**Telemetry Data
and Regional
Management Units
for Individual Species**

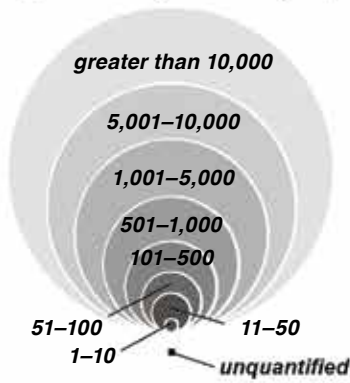
1 Mozambique and South Africa



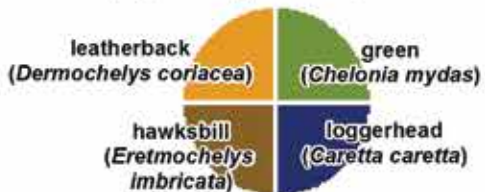
2 Kenya



total clutches for all species combined (most recently available year)



proportion species composition*



protected areas
country borders

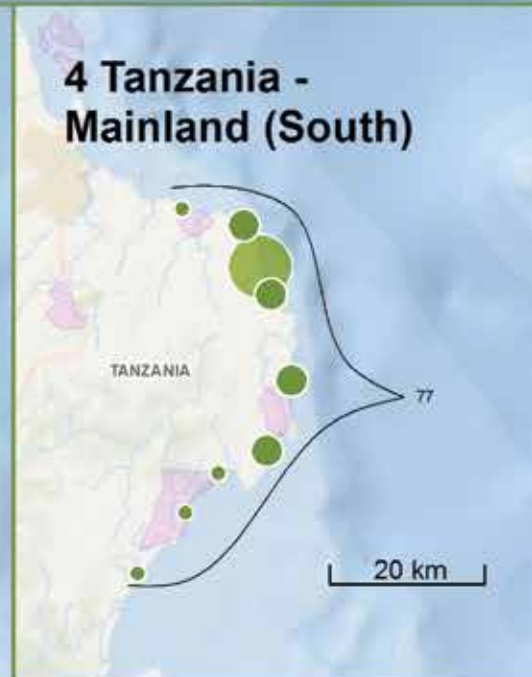
main map extents



3 Tanzania - Mainland (North)



4 Tanzania - Mainland (South)

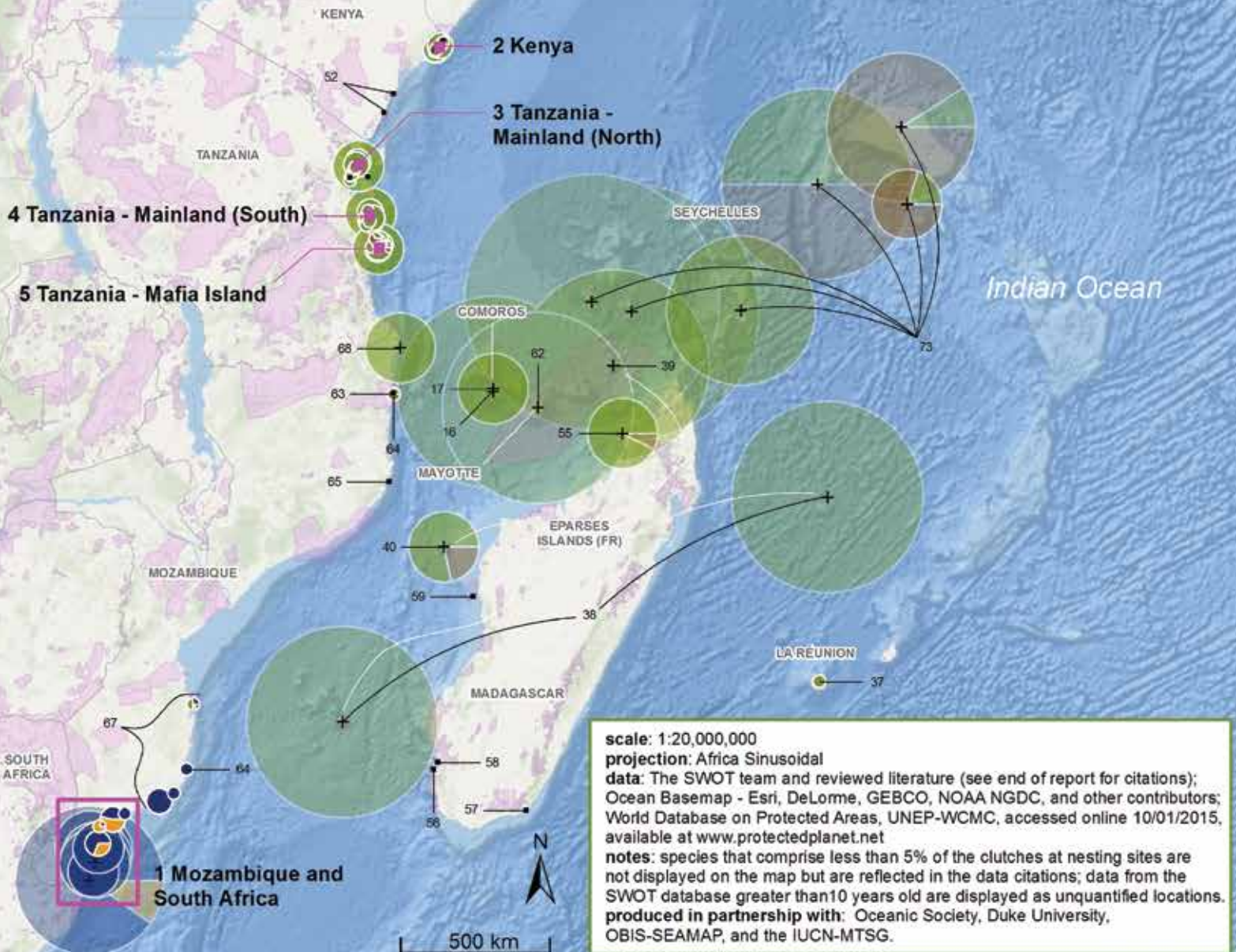
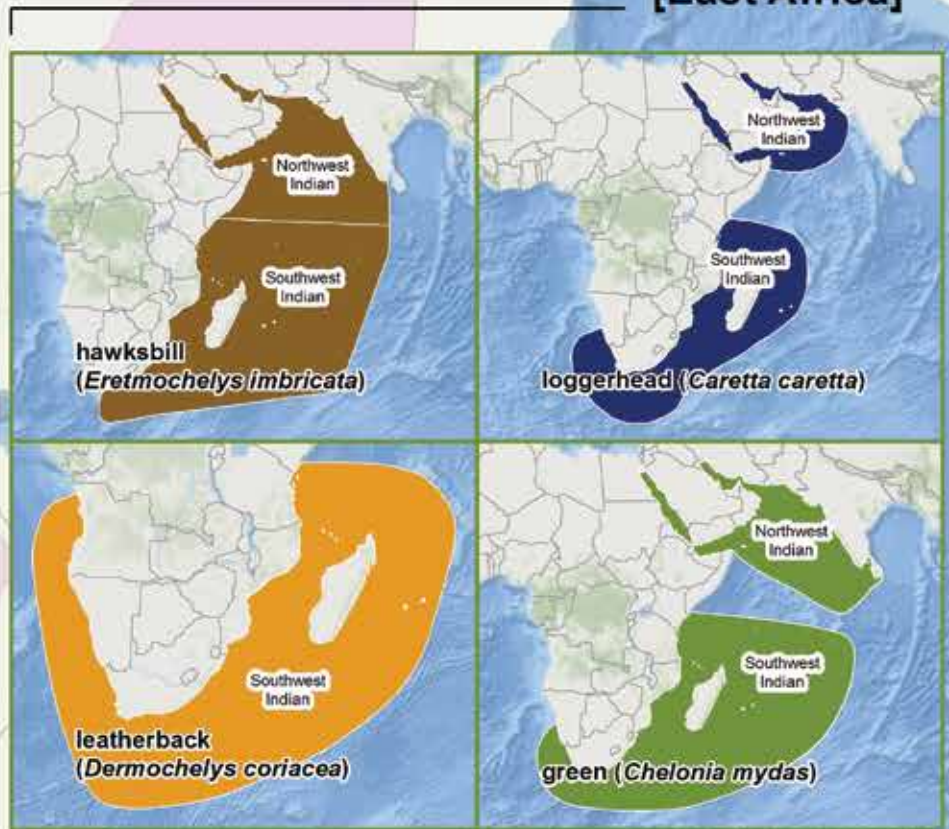


5 Tanzania - Mafia Island



Nesting Biogeography of Sea Turtles in the Southwest Indian Ocean

Regional Management Units [East Africa]



scale: 1:20,000,000
 projection: Africa Sinusoidal
 data: The SWOT team and reviewed literature (see end of report for citations); Ocean Basemap - Esri, DeLorme, GEBCO, NOAA NGDC, and other contributors; World Database on Protected Areas, UNEP-WCMC, accessed online 10/01/2015, available at www.protectedplanet.net
 notes: species that comprise less than 5% of the clutches at nesting sites are not displayed on the map but are reflected in the data citations; data from the SWOT database greater than 10 years old are displayed as unquantified locations.
 produced in partnership with: Oceanic Society, Duke University, OBIS-SEAMAP, and the IUCN-MTSG.

SWOT Data Contributors

AFRICA

We are grateful to all who generously contributed their sea turtle data for inclusion in the maps on pages 24–29. We are especially grateful to the following individuals who went above and beyond to help coordinate and facilitate data contributions: Jérôme Bourjea, Mayeul Dalleau, Alexandre Girard, Marc Girondot, Shaya Honarvar, and Jeanne Mortimer. We simply could not have done this without you—**thank you**.

GUIDELINES OF DATA USE AND CITATION

The data that follow correspond directly to the maps on pages 24–29. In the case of nesting data included in the maps on pages 24–25 and 28–29, every data record is numbered to correspond with its respective point on the map. To use data for research or publication, you must obtain permission from the data provider(s).

Nesting Data Citations

DEFINITIONS OF TERMS

Clutches: A count of the number of nests of eggs laid by females during the monitoring period. **Crawl:** A female turtle's emergence onto the beach to nest. Such counts may include false crawls. **Nesting females:** A count of nesting female turtles observed during the monitoring period. **Year:** The year in which a given nesting season ended (e.g., data collected between late 2015 and early 2016 are listed as year 2016).

Nesting data are reported here from the most recent available nesting season. Beaches for which count data are not available are listed as “unquantified.” A reported count of “N/A” indicates no data were reported for that species at the respective site. Additional metadata are available for many of the data records and may be found online at <http://seamap.env.duke.edu/swot>.

ANGOLA

DATA RECORD 1

Data Source: (1) Brian, C. 2007. Sea turtle nesting in Angola: Personal communication. In *SWOT Report—State of the World's Sea Turtles*, vol. II (2007). (2) Carr, T., and N. Carr. 1991. Surveys of the sea turtles of Angola. *Biological Conservation* 58 (1): 19–29.

Nesting Beaches: Luanda (north) to Rio Longa (south)

Years: 2004 (*Dermochelys coriacea*) and 1985 (*Lepidochelys olivacea*) **Species and Counts:** *Dermochelys coriacea*—108 clutches; *Lepidochelys olivacea*—100 clutches

SWOT Contact: Conrad Brian

DATA RECORD 2

Data Source: Carr, T., and N. Carr. 1991. Surveys of the sea turtles of Angola. *Biological Conservation* 58(1): 19–29.

Nesting Beach: Cabinda Province

Year: 1983 **Species and Count:** *Lepidochelys olivacea*—5 clutches

DATA RECORD 3

Data Source: Ron, T. 2006. Leatherback nesting in Angola. Personal communication. In *SWOT Report—State of the World's Sea Turtles*, vol. I (2006).

Nesting Beaches: Beaches along the coast of the Cabinda Province in the north to Baía Farta

Year: 2002 **Species and Count:** *Dermochelys coriacea*—unquantified

SWOT Contact: Tamar Ron

DATA RECORD 4

Data Source: Weir, C. R., T. Ron, M. Morais, and A. D. C. Duarte. 2007. Nesting and at-sea distribution of marine turtles in Angola, West Africa, 2000–2006: Occurrence, threats and conservation implications. *Oryx* 41(2): 224–31.

Nesting Beaches: Benguela Province; Namibe Province; Palmeirinhas

Years: 2006, 2003, and 2005, respectively **Species and Counts:** *Lepidochelys olivacea*—unquantified; *Chelonia mydas*—unquantified; *Dermochelys coriacea*—4 clutches, and *Lepidochelys olivacea*—120 clutches, respectively.

SWOT Contact: Tamar Ron

DATA RECORD 5

Data Source: Wildlife Conservation Society and Angola Liquid Natural Gas. 2009. *Marine Turtle Research and Conservation in the Sereia Peninsula, Angola: End of Season Report, June 2009*. Unpublished report.

Nesting Beaches: Sereia Peninsula from Ponta do Padrão to Sereia Beach

Year: 2008 **Species and Count:** *Lepidochelys olivacea*—181 clutches

BENIN

DATA RECORD 6

Data Source: Dossou-Bodjrenou, J. S., and A. Tehou. 2002. The status of efforts to protect

Atlantic sea turtles in Benin (West Africa). In A. Mosier, A. Foley, and B. Brost (eds.), *Proceedings of the Twentieth Annual Symposium on Sea Turtle Biology and Conservation*, NOAA Technical Memorandum NMFS-SEFSC-477. Miami, FL: NOAA.

Nesting Beaches: Djegbadji; Grand-Popo; Hilla-Conji; Somo; Togbin

Year: 1999 **Species and Counts:** *Dermochelys coriacea*—unquantified

DATA RECORD 7

Data Source: Fretey, J. 2001. Biogeography and conservation of marine turtles of the Atlantic Coast of Africa. *CMS Technical Series*, no. 6. United Nations Environment Programme/Convention on the Conservation of Migratory Species of Wild Animals Secretariat, Bonn, Germany.

Nesting Beaches: Beaches of Benin **Species and Counts:** *Lepidochelys olivacea*—unquantified

DATA RECORD 8

Data Source: *Nature Tropicale*. 2006. Rapport d'activités n 0010/PTM/NT: Suivi écologique et protection des tortues marines sur le littoral du Bénin (2005–2006).

Nesting Beaches: Avlo Embouchure and Gbecon (Grand-Popo)

Year: 2005 **Species and Counts:** *Dermochelys coriacea*—8 nesting females and 17 clutches, respectively

SWOT Contact: Joséa S. Dossou-Bodjrenou

CAMEROON

DATA RECORD 9

Data Source: Kudu Project—Cameroon component (Kudu à Tubé), A. Ayissi, H. Angoni, and J. Fretey. 2017. Sea turtle nesting in Cameroon: Personal communication. In *SWOT Report—State of the World's Sea Turtles*, vol. XII (2017).

Nesting Beaches: Bekolobé; Boussibelika; Ebodjé; Eboundja; Elombo; Ipeyendjé; Lolabé; Mbendji; Nlendé

Years: 2014 for all except Lolabé, which is 2013 **Species and Counts:** *Chelonia mydas*—1 clutch at Ebodjé and 2 nests at Ipeyendjé; *Dermochelys coriacea*—2 clutches at Eboundja, 0 at all other beaches; *Lepidochelys olivacea*—5, 4, 1, 5, 0, 3, 5, 6, and 0 clutches, respectively.

SWOT Contacts: Isidore Ayissi and Hyacinthe Angoni

CABO VERDE

DATA RECORD 10

Data Source: López-Jurado, L. F., P. Sanz, and E. Abella. 2007. Loggerhead nesting on Boa Vista, República de Cabo Verde. In *SWOT Report—State of the World's Sea Turtles*, vol. II (2007).

Nesting Beach: Laiedo Texeira

Year: 2005 **Species and Count:** *Caretta caretta*—5,396 clutches

SWOT Contacts: Elena Abella-Perez, Luis Felipe López-Jurado, and Paula Sanz

DATA RECORD 11

Data Source: (1) Loureiro, N. S. 2009. Personal communication. In C. Y. Kot, E. Fujioka, A. DiMatteo, B. Wallace, B. Hutchinson, J. Cleary, P. Halpin, and R. Mast. 2015. The State of the World's Sea Turtles Online Database: Data provided by the SWOT Team and hosted on OBIS-SEAMAP. Oceanic Society, IUCN Marine Turtle Specialist Group (MTSG), and Marine Geospatial Ecology Lab, Duke University. <http://seamap.env.duke.edu/swot>.

(2) Loureiro, N. S. 2010. Personal communication. In C. Y. Kot, E. Fujioka, A. DiMatteo, B. Wallace, B. Hutchinson, J. Cleary, P. Halpin, and R. Mast. 2015. The State of the World's Sea Turtles Online Database: Data provided by the SWOT Team and hosted on OBIS-SEAMAP. Oceanic Society, IUCN Marine Turtle Specialist Group (MTSG), and Marine Geospatial Ecology Lab, Duke University. <http://seamap.env.duke.edu/swot>.

Nesting Beaches: Mangué de Montenegro; Ribeira da Prata; Tarrafal; Achada Baleia; Praia Baixo

Years: 2008, 2008, 2008, 2009, and 2009, respectively **Species and Counts:** *Caretta caretta*—1, 19, 2, 23, and 15 clutches, respectively

SWOT Contact: Nuno de Santos Loureiro

DATA RECORD 12

Data Source: (1) Marco, A., E. Abella, A. Liria-Loza, S. Martins, O. López, S. Jiménez-Bordón, M. Medina, C. Oujo, P. Gaona, B. J. Godley, and L. F. López-Jurado. 2012. Abundance and exploitation of loggerhead turtles nesting in Boa Vista Island, Cabo Verde: The only substantial rookery in the eastern Atlantic. *Animal Conservation* 15: 351–60.

(2) Marco, A., E. Abella, S. Martins, A. Liria-Loza, S. Jiménez Bordón, M. E. Medina Suarez, C. Oujo Alamo, O. López, and L. F. López-Jurado. 2013. The coast of Cape Verde constitutes the third largest loggerhead nesting population in the world. In J. Blumenthal, A. Panagopoulou, and A. F. Rees (eds.), *Proceedings of the Thirtieth Annual Symposium on Sea Turtle Biology and Conservation*. NOAA Technical Memorandum NMFS-SEFSC-640. Miami, FL: NOAA.

Nesting Beaches: Beaches of Boa Vista Island

Year: 2009 **Species and Count:** *Caretta caretta*—19,950 clutches

DATA RECORD 13

Data Source: Martins, S., Soares, F., Abella, E., Koenen, F., and A. Marco. 2013. Importance of the Island of Maio (Cape Verde) for current and future loggerhead conservation in the eastern Atlantic. In T. Tucker, L. Belskis,

A. Panagopoulou, A. F. Rees, M. Frick, K. Williams, R. LeRoux, and K. Stewart (eds.), *Proceedings of the Thirty-Third Annual Symposium on Sea Turtle Biology and Conservation*. NOAA Technical Memorandum NMFS-SEFC-645. Miami, FL: NOAA.

Nesting Beaches: Beaches of Maio Island

Year: 2012 **Species and Count:** *Caretta caretta*—1,001–5,000 clutches

DATA RECORD 14

Data Source: Rocha, P. R., Melo, T., Rebelo, R., and P. Catry. 2015. A significant nesting population of loggerhead turtles at the Nature Reserve of Santa Luzia, Cabo Verde. *Chelonian Conservation and Biology* 14(2): 161–66.

Nesting Beaches: Achados Beach, Santa Luzia Island; Francisca Beach, Santa Luzia Island; Palmo Tostão Beach, Santa Luzia Island

Years: 2013, 2013, and 2011, respectively

Species and Counts: *Caretta caretta*—286, 277, and 13 clutches, respectively

DATA RECORD 15

Data Source: Taylor, H., and J. Cozens. 2010. The effects of tourism, beachfront development and increased light pollution on nesting loggerhead turtles *Caretta caretta* (Linnaeus, 1758) on Sal, Cape Verde islands. *Zoologia Caboverdiana* 1(2): 100–11.

Nesting Beaches: Beaches of Sal Island

Year: 2010 **Species and Count:** *Caretta caretta*—357 clutches

COMOROS

DATA RECORD 16

Data Source: (1) Bourjea, J., M. Dalleau, S. Derville, F. Beudard, C. Marmoeux, A. M'Soili, D. Roos, S. Ciccione, and J. Frazier. 2015. Seasonality, abundance, and fifteen-year trend in green turtle nesting activity at Itsamia, Moheli, Comoros. *Endangered Species Research* 27: 265–76.

(2) Dalleau, M., S. Ciccione, J. A. Mortimer, J. Garnier, S. Benhamou, and J. Bourjea. 2012. Nesting phenology of marine turtles: Insights from a regional comparative analysis on green turtle (*Chelonia mydas*). *PLoS ONE* 7(10): e46920. (3) Bourjea, J. 2017. Sea turtle nesting in Itsamia, Comoros. Personal communication. In *SWOT Report—State of the World's Sea Turtles*, vol. XII (2017).

Nesting Beaches: Itsamia (five beaches) **Years:** 2000–2006 **Species and Count:** *Chelonia mydas*—5,000 estimated clutches per year

SWOT Contacts: Dhoihirdine Ahamada Bacar, Anfani M'Soili, Mayeul Dalleau, Claire Jean, Stéphane Ciccione, and Jérôme Bourjea

DATA RECORD 17

Data Source: (1) Kélonia/Ifremer TORSOOI database. (2) C3/HUPPE. 2010. Personal communication. In *SWOT Report—State of the World's Sea Turtles*, vol. VI (2011).

Nesting Beaches: Fomboni-Hoani

Year: 2010 **Species and Count:** *Chelonia mydas*—134 clutches
SWOT Contacts: Jérôme Bourjea, Stéphane Ciccione, Chris Poonian, and Claire Jean

CONGO, REPUBLIC OF THE

DATA RECORD 18

Data Source: (1) Bréheret, N., T. Bourget, A. Berry, and A. Girard. 2012. *Rapport d'activité du programme d'étude et conservation des tortues marines au Congo: Saison 2011–2012*. Rénatura. (2) Bréheret, N., A. Berry, J.-G. Mavoungou, and A. Girard. 2013. *Study and Conservation of Sea Turtles Nesting in the Republic of Congo: Season 2012–2013*. Rénatura. (3) Bréheret, N., S. Pourcel, J.-G. Mavoungou, and A. Girard. 2014. *Study and Conservation of Sea Turtles Nesting in the Republic of Congo: Season 2013–2014*. Rénatura.

Nesting Beach: Bas-Kouilou Sud
Year: 2013 **Species and Counts:** *Chelonia mydas*—2 clutches; *Dermochelys coriacea*—11 clutches; *Lepidochelys olivacea*—4 clutches
SWOT Contacts: Nathalie Bréheret and Jean-Gabriel Mavoungou

DATA RECORD 19

Data Source: (1) Bitsindou, A. 2006. *Rapport d'activité WCS, Volet Recherches Ecologiques, recensement des tortues marines au Parc National de Konkouati-Douli—Saison 2005–2006*. (2) Bal, G., N. Bréheret, and H. Vanleeuwe. 2007. An update on sea turtle conservation activities in the Republic of Congo. *Marine Turtle Newsletter* 116: 9–10.

Nesting Beach: Konkouati Lagoon
Year: 2005 **Species and Counts:** *Lepidochelys olivacea*—302 clutches

DATA RECORD 21

Data Source: Rénatura Congo. 2017. Sea turtle nesting in Republic of the Congo: Personal communication. In *SWOT Report—State of the World's Sea Turtles*, vol. XII (2017).

Nesting Beaches: Bas-Kouilou Nord; Bellelo and Longo-Bondy; Cabinda Frontier; Djeno; Mvassa; Pointe-Noire

Year: 2014 **Species and Counts:** *Chelonia mydas*—2, 0, 0, 1, 5, and 0 clutches, respectively; *Dermochelys coriacea*—3, 20, 9, 17, 9, and 2 clutches, respectively; *Lepidochelys olivacea*—27, 37, 14, 150, 175, and 69 clutches, respectively

SWOT Contacts: Nathalie Bréheret and Jean-Gabriel Mavoungou

CONGO, DEMOCRATIC REPUBLIC OF THE

DATA RECORD 22

Data Source: Mbungu, S., C. Collet, A. Girard, and M. Girondot. 2013. *Nesting Report ACODES 2012*.

Nesting Beaches: Nsiamfumu; Tonde; Banana
Year: 2013 **Species and Counts:** *Lepidochelys olivacea*—19, 39, and 48 clutches, respectively

SWOT Contact: Samuel Mbungu Ndamba

CÔTE D'IVOIRE

DATA RECORD 23

Data Source: Peñate, J. G. 2017. Sea turtle nesting in Côte d'Ivoire. Personal communication. In *SWOT Report—State of the World's Sea Turtles*, vol. XII (2017).

Nesting Beach: Mani-Kablaké
Year: 2015 **Species and Counts:** *Chelonia mydas*—47 clutches; *Dermochelys coriacea*—64 clutches; *Lepidochelys olivacea*—504 clutches
SWOT Contact: José Gómez Peñate

DATA RECORD 24

Data Source: Fretey, J. 1999. Repartition des tortues du genre *Lepidochelys* Fitzinger, 1843. I. L'Atlantique ouest. *Biogeographica* 75(3): 97–117.

Nesting Beaches: Dagbeogo; Monogaga
Year: 1999 **Species and Counts:** *Lepidochelys olivacea*—unquantified at both sites

DATA RECORD 25

Data Source: (1) Fretey, J. 2001. Biogeography and conservation of marine turtles of the Atlantic Coast of Africa. *CMS Technical Series*, no. 6. United Nations Environment Programme/Convention on the Conservation of Migratory Species of Wild Animals Secretariat, Bonn, Germany. (2) Fretey, J. 1999. Repartition des tortues du genre *Lepidochelys* Fitzinger, 1843. I. L'Atlantique ouest. *Biogeographica* 75(3): 97–117.

Nesting Beaches: Many; Dodo
Species and Counts: *Eretmochelys imbricata*—unquantified; *Lepidochelys olivacea*—unquantified

DATA RECORD 26

Data Source: Gómez, J. 2006. Projet de conservation de tortues marines en Côte d'Ivoire. Personal communication. In *SWOT Report—State of the World's Sea Turtles*, vol. II (2007).

Nesting Beaches: Abréby; Addah; Jacquenville; Noumouzou; Taki to Blieron

Years: 2004, 2005 (Taki to Blieron only)

Species and Counts: *Dermochelys coriacea*—3, 7, 15, 6, and unquantified clutches, respectively

SWOT Contact: José Gómez Peñate

DATA RECORD 27

Data Source: Gómez, J. 2012. Sea turtle nesting in Côte d'Ivoire. Personal communication. In C. Y. Kot, E. Fujioka, A. DiMatteo, B. Wallace, B. Hutchinson, J. Cleary, P. Halpin, and R. Mast. 2015. The State of the World's Sea Turtles Online Database: Data provided by the SWOT Team and hosted on OBIS-SEAMAP. Oceanic Society, IUCN Marine Turtle Specialist Group (MTSG), and Marine Geospatial Ecology Lab, Duke University. <http://seamap.env.duke.edu/swot>.

Nesting Beach: Mondoukou

Year: 2010 **Species and Counts:** *Dermochelys coriacea*—11 clutches;

Lepidochelys olivacea—32 clutches

SWOT Contact: José Gómez Peñate

DATA RECORD 28

Data Source: (1) Gómez, J. 2006. Projet de conservation de tortues marines en Côte d'Ivoire. In *SWOT Report—State of the World's Sea Turtles*, vol. II (2007). (2) Gómez, J., B. Sory, and K. Mamadou. 2003. A preliminary survey of sea turtles in the Ivory Coast. In J. A. Seminoff (ed.), *Proceedings of the Twenty-Second Annual Symposium on Sea Turtle Biology and Conservation*. NOAA Technical Memorandum NMFS-SEFSC-503. Miami, FL: NOAA.

Nesting Beaches: Pitike; Soublake
Years: 2004 (*Dermochelys coriacea*), 2001 (*Lepidochelys olivacea*)

Species and Counts: *Dermochelys coriacea*—121 and 41 clutches, respectively; *Lepidochelys olivacea*—72 and 50 clutches, respectively

SWOT Contact: José Gómez Peñate

EQUATORIAL GUINEA

DATA RECORD 29

Data Source: Fallabrino, A., and TOMAGE. 2016. Sea turtle nesting in Equatorial Guinea. Personal communication. In *SWOT Report—State of the World's Sea Turtles*, vol. XII (2017).

Nesting Beaches: Ilende; Nendyi; Tika
Years: 2015 (Ilende and Tika), 2011 (Nendyi)

Species and Counts: *Dermochelys coriacea*—1–25, 1–25, and 1–25 clutches, respectively; *Lepidochelys olivacea*—25–100, N/A, and 1–25 clutches, respectively

SWOT Contact: Alejandro Fallabrino

DATA RECORD 30

Data Source: Formia, A. 1999. Les tortues marines de la baie de Corisco. *Canopée* 14: i–ii.

Nesting Beach: Cabo San Juan
Year: 1999 **Species and Count:** *Lepidochelys olivacea*—unquantified

DATA RECORD 31

Data Source: Fretey, J. 2001. Biogeography and conservation of marine turtles of the Atlantic Coast of Africa. *CMS Technical Series* no. 6. United Nations Environment Programme/Convention on the Conservation of Migratory Species of Wild Animals Secretariat, Bonn, Germany.

Nesting Beaches: Beaches north of Bata; Corsico Island

Year: 2001 **Species and Counts:** *Chelonia mydas*—unquantified at all sites; *Lepidochelys olivacea*—none and unquantified, respectively

DATA RECORD 32

Data Source: (1) Hearn, G. W., H. Rader, and J. L. Bradsby. 2006. Leatherback nesting in Bioko Island, Equatorial Guinea. In *SWOT Report—State of the World's Sea Turtles*, vol. I (2006). (2) Tomás, J., B. J. Godley, J. Castroviejo, and J. A. Raga. 2010. Bioko: Critically important nesting habitat for sea turtles of West Africa. *Biodiversity and Conservation* 19(9): 2699–2714.

Nesting Beaches: Beach B; Beach D
Years: 2005 (*Dermochelys coriacea* and *Eretmochelys imbricata*), 1997 (*Chelonia mydas* and *Lepidochelys olivacea*)

Species and Counts: *Chelonia mydas*—444 and 218 clutches, respectively; *Dermochelys coriacea*—132 and 575 clutches, respectively;

Eretmochelys imbricata—0 clutches at both sites; *Lepidochelys olivacea*—19 and 28 clutches, respectively

SWOT Contact: Gail W. Hearn

DATA RECORD 33

Data Source: (1) Rader, H., S. Nsue Esono, J. Bradsby, W. Morra, and G. Hearn. 2006. Leatherback nesting in Bioko Island, Equatorial Guinea. In *SWOT Report—State of the World's Sea Turtles*, vol. II (2007). (2) Tomás, J., B. J. Godley, J. Castroviejo, and J. A. Raga. 2010. Bioko: Critically important nesting habitat for sea turtles of West Africa. *Biodiversity and Conservation* 19(9): 2699–2714.

Nesting Beaches: Beach A; Beach C; Beach E
Years: 2005 (*Dermochelys coriacea* and *Eretmochelys imbricata*), 1997 (*Chelonia mydas* and *Lepidochelys olivacea*)

Species and Counts: *Chelonia mydas*—464, 17, and 3 clutches, respectively; *Dermochelys coriacea*—137, 571, and 712 clutches, respectively; *Eretmochelys imbricata*—0, 2, and 0 clutches, respectively; *Lepidochelys olivacea*—5, 0, and 10 clutches, respectively

SWOT Contact: Gail W. Hearn

DATA RECORD 34

Data Source: Tomás, J., B. J. Godley, J. Castroviejo, and J. A. Raga. 2010. Bioko: Critically important nesting habitat for sea turtles of West Africa. *Biodiversity and Conservation* 19(9): 2699–2714.

Nesting Beach: Beach F

Year: 1997 **Species and Counts:** *Chelonia mydas*—109 clutches; *Dermochelys coriacea*—649 clutches; *Eretmochelys imbricata*—0 clutches; *Lepidochelys olivacea*—22 clutches

DATA RECORD 35

Data Source: Honarvar, S., D. B. Fitzgerald, C. L. Weitzman, E. M. Sinclair, J. M. Escara Echube, M. O'Connor, and G. W. Hearn. 2016. Assessment of important marine turtle nesting populations on the southern coast of Bioko Island, Equatorial Guinea. *Chelonian Conservation and Biology* 15(1): 79–89.

Nesting Beaches: Bioko Island—southern
Year: 2013 **Species and Counts:** *Chelonia mydas*—2,571 crawls; *Dermochelys coriacea*—3,010 crawls; *Eretmochelys imbricata*—5 crawls; *Lepidochelys olivacea*—176 crawls

SWOT Contact: Shaya Honarvar

DATA RECORD 36

Data Source: Tomás, J., J. Castroviejo, and J. A. Raga. 1999. Sea turtles in the South of Bioko Island (Equatorial Guinea). *Marine Turtle Newsletter* 84: 4–6.

Nesting Beaches: Beaches between Punta Oscura and Punta Santiago

Year: 2006 **Species and Counts:** *Lepidochelys olivacea*—150 clutches

FRENCH OVERSEAS TERRITORIES —ÉPARGES ISLANDS, LA RÉUNION, MAYOTTE

DATA RECORD 37

Data Source: (1) Jean, C., S. Ciccione, S. Bourjea, and M. Dalleau. 2017. Sea turtle nesting in French Southern Territories. Personal communication. In *SWOT Report—State of the World's Sea Turtles*, vol. XII (2017). (2) Ciccione, S., and J. Bourjea. 2006. Nesting of green turtles in Saint-Leu, Réunion Island. *Marine Turtle Newsletter* 112: 1–3. (3) Ciccione S., and J. Bourjea. 2010. Nesting beach revegetation and its influence on green turtle (*Chelonia mydas*) conservation in Réunion Island. *Indian Ocean Turtle Newsletter* 11: 50–52.

Nesting Beaches: La Réunion
Year: 2015 **Species and Counts:** *Chelonia mydas*—1 clutch

SWOT Contacts: Claire Jean, Stéphane Ciccione, Jérôme Bourjea, and Mayeul Dalleau

DATA RECORD 38

Data Source: (1) Jean, C., S. Ciccione, J. Bourjea, and M. Dalleau. 2017. Sea turtle nesting in French Southern Territories. Personal communication. In *SWOT Report—State of the World's Sea Turtles*, vol. XII (2017). (2) Le Gall, J. Y., P. Bosc, D. Chateau, and M. Taquet. 1986. Estimation du nombre de tortues vertes femelles adultes *Chelonia mydas* par saison de ponte à Tromelin et Europa (Océan Indien) (1973–1985). *Océanographie Tropicale* 21(1): 3–22.

(3) Lauret-Steppler, M., J. Bourjea, D. Roos, D. Pelletier, P. Ryan, S. Ciccione, and H. Grizel. 2007. Reproductive seasonality and trend of *Chelonia mydas* in the SW Indian Ocean: A 20 yr study based on track counts. *Endangered Species Research* 3: 217–227. (4) Derville, S., C. Jean, M. Dalleau, J. Y. Le Gall, S. Ciccione,

and J. Bourjea. 2015. Monitoring green turtles and nests on Tromelin Island reveals stable reproduction and population parameters over time. *Chelonian Conservation and Biology* 14(1): 11–20.

Nesting Beaches: Europa and Tromelin (Éparges Islands)

Year: 2015 **Species and Counts:** *Chelonia mydas*—20,727 and 14,787 crawls, respectively
SWOT Contacts: Claire Jean, Stéphane Ciccione, Jérôme Bourjea, and Mayeul Dalleau

DATA RECORD 39

Data Source: (1) Jean, C., S. Ciccione, J. Bourjea, and M. Dalleau. 2017. Sea turtle nesting in French Southern Territories. Personal communication. In *SWOT Report—State of the World's Sea Turtles*, vol. XII (2017). (2) Dalleau, M., S. Ciccione, J. A. Mortimer, J. Garnier, S. Benhamou, and J. Bourjea. 2012. Nesting phenology of marine turtles: Insights from a regional comparative analysis on green turtle (*Chelonia mydas*). *PLoS ONE* 7(1): e46920.

(3) Bourjea, J., S. Ciccione, M. Lauret-Steppler, C. Marmoeux, and C. Jean. 2011. Les Îles Éparses: 25 ans de recherche sur les tortues marines. *Bulletin de la Société Herpétologique de France* 139–140: 95–111.

Nesting Beaches: Glorieuses (Éparges Islands)

Year: 2015 **Species and Count:** *Chelonia mydas*—9,615 crawls

SWOT Contacts: Claire Jean, Stéphane Ciccione, Jérôme Bourjea, and Mayeul Dalleau

DATA RECORD 40

Data Source: (1) Jean, C., S. Ciccione, J. Bourjea, and M. Dalleau. 2017. Sea turtle nesting in French Southern Territories. Personal communication. In *SWOT Report—State of the World's Sea Turtles*, vol. XII (2017).

(2) Lauret-Steppler, M., S. Ciccione, and J. Bourjea. 2010. Monitoring of marine turtles reproductive activities in Juan de Nova, Éparges Islands, South Western Indian Ocean, based on tracks count and width. *Indian Ocean Turtle Newsletter* 11: 18–24.

Nesting Beaches: Juan de Nova (Éparges Islands)

Year: 2015 **Species and Counts:** *Chelonia mydas*—382 crawls; *Eretmochelys imbricata*—63 crawls

SWOT Contacts: Claire Jean, Stéphane Ciccione, Jérôme Bourjea, and Mayeul Dalleau

DATA RECORD 62

Data Source: (1) Quillard, M., and K. Ballorain. 2017. Sea turtle nesting in Mayotte. Personal communication. In *SWOT Report—State of the World's Sea Turtles*, vol. XII (2017). (2) Quillard, M. 2011. Les tortues marines à Mayotte: Bilan des actions de protection et perspectives. *Bulletin de la Société Herpétologique de France* 139–140: 113–129.

(3) Philippe J.-S., J. Bourjea, S. Ciccione, K. Ballorain, S. Marinesque, and Z. Glenard. 2014. *Plan national d'actions en faveur des tortues marines des territoires français de l'Océan Indien: La Réunion, Mayotte et Îles Éparses (2015–2020)*. Vols. 1–4. Ministère de l'Écologie, du Développement durable et de l'Énergie, Direction de l'Environnement, de l'Aménagement et du Logement de La Réunion.

(4) Bourjea, J., J. Frappier, M. Quillard, S. Ciccione, S. Roos, G. Hughes, and H. Grizel. 2007. Mayotte Island: Another important green turtle nesting site in the South West Indian Ocean. *Chelonia mydas* par saison de ponte à Tromelin et Europa (Océan Indien) (1973–1985).

Nesting Beaches: Mayotte Island (combined data from Moya [2 beaches] and Saziley [6 beaches])

Years: 2014 (Moya), 2015 (Saziley) **Species and Count:** *Chelonia mydas*—2,598 crawls (Moya) and 6,288 estimated clutches per year (Saziley)

Nesting Beach: Mayotte Island (all beaches)
Year: 2013 **Species and Count:** *Eretmochelys imbricata*—50 crawls

SWOT Contacts: Mireille Quillard, Katia Ballorain, and Jérôme Bourjea

GABON

DATA RECORD 41

Data Source: Formia, A. 1999. Les tortues marines de la Baie de Corisco. *Canopée* 14: i–ii.

Nesting Beaches: Hoco Island; Mbanye Island
Year: 1999 **Species and Counts:** *Lepidochelys olivacea*—unquantified at both sites

DATA RECORD 42
Data Source: Girard, A., M. C. Godgenger, A. Gibudji, J. Fretey, A. Billes, D. Roumet, G. Bal, N. Bréhéret, A. Bitsindou, H. Van Leeuwe, B. Verhage, S. Ricois, J. P. Bayé, J. Carvalho, H. Lima, E. Neto, H. Angoni, I. Ayissi, C. Bobeya, J. Folack, J. R. Ngueguim, and M. Girondot. 2016. Marine turtles nesting activity assessment and trend along the Central African Atlantic Coast for the period of 1999–2008. *International Journal of Marine Science and Ocean Technology* 3(3): 21–32.

Nesting Beaches: Pongara; Gamba; Mayumba
Year: 2006 **Species and Counts:** *Chelonia mydas*—25, 10, and 20 clutches, respectively; *Dermochelys coriacea*—6,900, 2860, and 35,000 clutches, respectively; *Eretmochelys imbricata*—5, 10, and N/A clutches, respectively; *Lepidochelys olivacea*—72, 155, and 2,500 clutches, respectively
SWOT Contacts: Alexandre Girard and Marc Girondot

DATA RECORD 43
Data Source: (1) Mounquengué, G.-A., and B. Verhage. 2007. Update after Five Years of Marine Turtle Monitoring in Gamba, Gabon (2002–2007). Gamba, Gabon: Ibonga ACPE and World Wildlife Fund. (2) Mounquengué, G.-A., and B. Verhage. 2008. *Activités de recherche et de suivi des tortues marines sur les plages de Gamba au Gabon*. Gamba, Gabon: Ibonga ACPE and World Wildlife Fund.

(3) Verhage, B., E. B. Moundjim, and S. R. Livingstone. 2006. *Four years of Marine Turtle Monitoring in the Gamba Complex of Protected Areas, Gabon, Central Africa, 2002–2006*. Gamba, Gabon: World Wildlife Fund.

Nesting Beach: Pont Dick
Years: 2004 (*Eretmochelys imbricata*), 2007 (*Lepidochelys olivacea*) **Species and Counts:** *Eretmochelys imbricata*—0 clutches; *Lepidochelys olivacea*—61 crawls
SWOT Contacts: Bas Verhage and Aimee Leslie

GAMBIA, THE

DATA RECORD 44
Data Source: Fretey, J. 2001. Biogeography and conservation of marine turtles of the Atlantic Coast of Africa. *CMS Technical Series*, no. 6. United Nations Environment Programme/Convention on the Conservation of Migratory Species of Wild Animals Secretariat, Bonn, Germany.

Nesting Beaches: Niuni National Park (Sine-Saloum)

Species and Count: *Chelonia mydas*—unquantified

GHANA

DATA RECORD 45
Data Source: (1) Adjei, R., G. Boakye, and S. Adu. 2001. Organisational profile: Ghana Wildlife Society. *Marine Turtle Newsletter* 93: 11–12. (2) Beyer, K., W. Ekau, and J. Blay. 2002. Sea turtle nesting and the effect of predation on the hatching success of the olive ridley (*Lepidochelys olivacea*) on Old Ningo Beach, Ghana, West Africa. In A. Mosier, A. Foley, and B. Brost (compilers), *Proceedings of the Twentieth Annual Symposium on Sea Turtle Biology and Conservation*, NOAA Technical Memorandum NMFS-SEFSC-477. Miami, FL: NOAA.

Nesting Beach: Ningo-Prampram
Year: 2001 **Species and Counts:** *Dermochelys coriacea*—unquantified

DATA RECORD 46
Data Source: Agyekumhene, A., and P. Allman. 2016. Sea turtle nesting in Ghana. Personal communication. In *SWOT Report—State of the World's Sea Turtles*, vol. XII (2017).

Nesting Beach: Winneba
Year: 2015 **Species and Counts:** *Chelonia mydas*—5 clutches; *Dermochelys coriacea*—2 clutches; *Lepidochelys olivacea*—84 clutches
SWOT Contact: Andrews Agyekumhene

DATA RECORD 47
Data Source: Fretey, J. 2001. Biogeography and conservation of marine turtles of the Atlantic Coast of Africa. *CMS Technical Series*, no. 6. United Nations Environment Programme/Convention on the Conservation of Migratory Species of Wild Animal Secretariat, Bonn, Germany.

Nesting Beaches: Ada-Foah; Keta-Anloga; Ningo-Prampram
Species and Counts: *Lepidochelys olivacea*—unquantified at all sites

DATA RECORD 48
Data Source: Wildlife Division of the Forestry Commission. 2011. Sea turtle nesting in central region of Ghana. Final annual reports from an ongoing nesting beach survey.

Nesting Beach: Warabebeba
Year: 2011 **Species and Counts:** *Chelonia mydas*—1 clutch; *Dermochelys coriacea*—1 clutch; *Lepidochelys olivacea*—10 clutches
SWOT Contact: Andrews Agyekumhene

GUINEA

DATA RECORD 49
Data Source: Fretey, J. 2001. Biogeography and conservation of marine turtles of the Atlantic Coast of Africa. *CMS Technical Series*, no. 6. United Nations Environment Programme/Convention on the Conservation of Migratory Species of Wild Animals Secretariat, Bonn, Germany.

Nesting Beaches: Beaches of Roume Island
Species and Count: *Eretmochelys imbricata*—unquantified

GUINEA-BISSAU

DATA RECORD 50
Data Source: Ferreira Airaud, M. B., A. Regalla, and Institute for Biodiversity and Protected Areas of Guinea-Bissau. 2015. Sea turtle nesting in Bijagós Archipelago, Guinea-Bissau. Personal communication. In C. Y. Kot, E. Fujioka, A. DiMatteo, B. Wallace, B. Hutchinson, J. Cleary, P. Halpin, and R. Mast. 2015. The State of the World's Sea Turtles Online Database: Data provided by the SWOT Team and hosted on OBIS-SEAMAP. Oceanic Society, IUCN Marine Turtle Specialist Group (MTSG), and Marine Geospatial Ecology Lab, Duke University. <http://seamap.env.duke.edu/swot>.

Nesting Beaches: Orango National Park and Poilão (Bijagós Archipelago)
Years: 2014 (*Chelonia mydas* and *Eretmochelys imbricata*), 2013 (*Lepidochelys olivacea* and *Dermochelys coriacea*) **Species and Counts:** *Chelonia mydas*—424 clutches and 41,042 crawls, respectively; *Dermochelys coriacea*—1 and N/A clutches, respectively; *Eretmochelys imbricata*—N/A and 2 clutches, respectively; *Lepidochelys olivacea*—55 and N/A clutches, respectively

SWOT Contacts: M. Betânia Ferreira Airaud and Aissa Regalla

KENYA

DATA RECORD 51
Data Source: Olendo, M. I., and World Wildlife Fund Kenya. 2017. Sea turtle nesting in Kenya. Personal communication. In *SWOT Report—State of the World's Sea Turtles*, vol. XII (2017).

Nesting Beaches: Ashuwei; Chandani; Chole; Chongo Katiti; Chunduni; Ishakani; Kitanga Kikuu; Kitanga Kipiya; Kitangani; Kiunga Mwini; Kiwayu; Kongoale; KSV; Kui; Magogo; Mdoa; Mkokoni; Mongo Shariff; Mongoni; Mtumumwe; Mvundeni; Mwanabule; Ngazini; Porcupine; Rubu; Tangome; Usini; WWF/KWS [all beaches are in Lamu County]

Year: 2015 **Species and Counts:** *Chelonia mydas*—1, 22, 0, 1, 0, 0, 34, 3, 0, 2, 4, 10, 11, 0, 5, 1, 1, 34, 1, 0, 1, 6, 0, 7, 0, 0, 0, and 8 clutches, respectively; *Eretmochelys imbricata*—1 clutch (Kongoale); *Lepidochelys olivacea*—1 clutch (Kongoale)

SWOT Contact: Mike Izava Olendo

DATA RECORD 52
Data Source: (1) Okemwa, G. M., and A. Wamukota. 2006. An overview of the status of green turtles (*Chelonia mydas*) in Kenya. In M. Frick, A. Panagopoulou, A. F. Rees, and K. Williams (eds.), *Proceedings of the Twenty-Sixth Annual Symposium on Sea Turtle Biology and Conservation*. Athens, Greece: International Sea Turtle Society. (2) Okemwa, G. M., S. Nzuki, and E. M. Muenis. 2004. The status and conservation of sea turtles in Kenya. *Marine Turtle Newsletter* 105: 1–6.

Nesting Beaches: Watamu; Mombasa
Year: 2000 **Species and Counts:** *Chelonia mydas*—2 and N/A clutches, respectively; *Lepidochelys olivacea*—4 and 8 clutches, respectively

LIBERIA

DATA RECORD 53
Data Source: Plotkin, P. T. 2007. Olive Ridley Sea Turtle (*Lepidochelys olivacea*) Five-Year Review: Summary and Evaluation. Jacksonville, FL: National Marine Fisheries Service and U.S. Fish and Wildlife Service.

Nesting Beaches: Probable nesting on extreme southern beaches
Year: 2007 **Species and Counts:** *Lepidochelys olivacea*—unquantified

DATA RECORD 54
Data Source: Plotkin, P. T. 2007. *Olive Ridley Sea Turtle (Lepidochelys olivacea) Five-Year Review: Summary and Evaluation*. Jacksonville, FL: National Marine Fisheries Service and U.S. Fish and Wildlife Service.

Nesting Beaches: Bafu Bay; Borgor Point
Year: 2006 **Species and Counts:** *Eretmochelys imbricata*—7 and 8 clutches, respectively

MADAGASCAR

DATA RECORD 55
Data Source: (1) Jean, C., S. Ciccione, J. Bourjea, M. Dalleau, and I. Vandry. 2017. Sea turtle nesting in Iranja Kely, Madagascar. Personal communication. In *SWOT Report—State of the World's Sea Turtles*, vol. XII (2017). (2) Bourjea, J., S. Ciccione, and R. Ratsimbazafy. 2006. Marine turtles surveys in Nosy Iranja Kely, North-Western Madagascar. *Western Indian Ocean Journal of Marine Science* 5(2): 209–12.

Nesting Beach: Iranja Kely
Year: 2015 **Species and Counts:** *Chelonia mydas*—208 clutches; *Eretmochelys imbricata*—17 clutches
SWOT Contacts: Claire Jean, Stéphane Ciccione, Jérémy Bourjea, Mayeul Dalleau, and Ignace Vandry

DATA RECORD 56
Data Source: Frontier-Madagascar. 2003. *Artisanal and traditional turtle resource utilisation in South West Madagascar*. Toliara, Madagascar: U.K. Society for Environmental Exploration and Institute of Marine Sciences, University of Toliara.

Nesting Beaches: Beaches around Besambay and Maromena

Year: 2004 **Species and Counts:** *Caretta caretta*—unquantified

DATA RECORD 57
Data Source: (1) Gladstone, N. 2007. Loggerhead nesting in Madagascar. Personal communication. In *SWOT Report—State of the World's Sea Turtles*, vol. II (2007). (2) Gladstone, N., F. Andriantahina, and B. Soaiviavy. 2003. *Azafady Project Fanomena Final Report*. Unpublished manuscript.

Nesting Beaches: Beaches between Fort-Dauphin and Manantenina
Year: 2004 **Species and Counts:** *Caretta caretta*—26–100 clutches
SWOT Contact: Nancy Gladstone

DATA RECORD 58
Data Source: United Nations Environment Programme—World Conservation Monitoring Centre. The Marine Turtle Interactive Mapping System (IMAPS): Green turtle nesting data. <http://stort.unep-wcmc.org/imaps/IndTurtles/viewer.htm>. Accessed 2010.

Nesting Beach: Tulear
Year: 1999
Species and Counts: *Chelonia mydas*—100–500 nesting females

DATA RECORD 59
Data Source: Leroux, G. 2005. *Réseau interdisciplinaire pour une gestion durable de la biodiversité marine: Diagnostic environnemental et social autour des tortues marines dans le Sud-ouest de l'Océan Indien*. Geneva: Geneva International Academic Network.

Nesting Beach: Barren Isles Archipelago
Year: 2005 **Species and Counts:** *Chelonia mydas*—unquantified

MAURITANIA

DATA RECORD 60
Data Source: Arvy, C., A. T. Dia, F. Colas, and J. Fretey. 2000. Records of *Caretta caretta* in Mauritania. *Marine Turtle Newsletter* 88: 8.

Nesting Beaches: Levrier Bay and Tânit Bay
Year: 1997 **Species and Counts:** *Caretta caretta*—unquantified at both sites

DATA RECORD 61
Data Source: Fretey, J. 2001. Biogeography and conservation of marine turtles of the Atlantic Coast of Africa. *CMS Technical Series*, no. 6. United Nations Environment Programme/Convention on the Conservation of Migratory Species of Wild Animals Secretariat, Bonn, Germany.

Nesting Beach: Banc d'Apos
Species and Counts: *Chelonia mydas*—unquantified
***For Data Record 62, see French Overseas Territories, above.**

MOZAMBIQUE
DATA RECORD 63
Data Source: Costa, A. 2007. *Report of Marine Turtle Conservation in Quirimbas National Park,*

Cabo Delgado. Marine Programme, World Wildlife Fund Mozambique, Maputo, Mozambique.

Nesting Beaches: Paquissico Tchawane Beach and Lemani Beach

Year: 2005 **Species and Counts:** *Eretmochelys imbricata*—unquantified at both sites
SWOT Contact: Alice Costa

DATA RECORD 64
Data Source: Costa, A., and A. Mate. 2009. Sea turtle nesting in Mozambique. Personal communication. In C. Y. Kot, E. Fujioka, A. DiMatteo, B. Wallace, B. Hutchinson, J. Cleary, P. Halpin, and R. Mast. 2015. The State of the World's Sea Turtles Online Database: Data provided by the SWOT Team and hosted on OBIS-SEAMAP. Oceanic Society, IUCN Marine Turtle Specialist Group (MTSG), and Marine Geospatial Ecology Lab, Duke University. <http://seamap.env.duke.edu/swot>.

Nesting Beaches: Bazaruto National Park; Manhica; Milibangalala; Quirimbas National Park; Tofo; Xai-Xai

Year: 2008 **Species and Counts:** *Caretta caretta*—141, 4, and 2 clutches (Milibangalala, Tofo, and Xai-Xai, respectively); *Chelonia mydas*—1 clutch (Quirimbas National Park); *Dermochelys coriacea*—8 and 10 clutches (Manhica and Milibangalala, respectively); *Eretmochelys imbricata*—1 clutch (Quirimbas National Park); *Lepidochelys olivacea*—1 clutch (Bazaruto National Park)

SWOT Contacts: Alice Costa and Alfredo Mate

DATA RECORD 65
Data Source: Costa, A., H. Motta, M. A. M. Pereira, E. J. S. Videira, C. M. M. Louro, and J. João. 2007. Marine turtles in Mozambique: Towards an effective conservation and management program. *Marine Turtle Newsletter* 117: 1–3.

Nesting Beaches: Primeiras and Segundas Islands
Year: 2004 **Species and Count:** *Chelonia mydas*—unquantified

DATA RECORD 66
Data Source: Fernandes, R. S., J. Williams, and J. Trindade. 2016. *Monitoring, Tagging and Conservation of Marine Turtles in Mozambique: Annual Report 2015/16*. Centro Terra Viva, Maputo, Mozambique.

Nesting Beaches: Monte Mutondo to Ponta Mucombo; Ponta do Ouro to Ponta Malongane; Ponta Malongane to Monte Mutondo; Ponta Mucombo to Cabo de Santa Maria
Year: 2015 **Species and Counts:** *Caretta caretta*—385, 100, 936, and 157 crawls, respectively; *Dermochelys coriacea*—2, 3, 36, and 9 crawls, respectively
SWOT Contacts: Miguel Gonçalves and Raquel Fernandes

DATA RECORD 67
Data Source: Mate, A. 2010. Sea turtle nesting in Mozambique. Personal communication. In C. Y. Kot, E. Fujioka, A. DiMatteo, B. Wallace, B. Hutchinson, J. Cleary, P. Halpin, and R. Mast. 2015. The State of the World's Sea Turtles Online Database: Data provided by the SWOT Team and hosted on OBIS-SEAMAP. Oceanic Society, IUCN Marine Turtle Specialist Group (MTSG), and Marine Geospatial Ecology Lab, Duke University. <http://seamap.env.duke.edu/swot>.

Nesting Beaches: Bazaruto National Park; Bilene; Dubela-Mucombo; Inhaca Island; Manhica; Zavala; Zavora
Year: 2009 **Species and Counts:** *Caretta caretta*—2, 6, 165, 20, 2, 11, 4 clutches, respectively; *Chelonia mydas*—3 clutches (Bazaruto National Park); *Dermochelys coriacea*—1, 7, and 9 clutches (Bazaruto National Park, Bilene, and Inhaca Island, respectively)

SWOT Contact: Alfredo Mate

DATA RECORD 68
Data Source: (1) *Vamizi Island Conservation and Community Report 2014–2015*. Pemba, Mozambique: Cabo Delgado Biodiversity and Tourism Company. (2) Fernandes, R. S., J. Williams, and J. Trindade. 2016. *Monitoring, Tagging and Conservation of Marine Turtles in Mozambique: Annual Report 2015/16*. Maputo, Mozambique: Centro Terra Viva. (3) Garnier, J., N. Hill, A. Guissamulo, I. Silva, A. Debney, and B. Godley. 2012. Status and community-based conservation of marine turtles in the northern Querimbas (Mozambique). *Oryx* 46(3): 359–67

Nesting Beach: Vamizi Island
Year: 2015 **Species and Count:** *Chelonia mydas*—189 clutches
SWOT Contact: Alfredo Mate

NIGERIA

DATA RECORD 69

Data Source: Gironot, M., and A. Girard. 2017. Sea turtle nesting in Nigeria. Personal communication. In *SWOT Report—State of the World's Sea Turtles*, vol. XII (2017).

Nesting Beaches: Eastern Beach; Port Lekki Beach; Western Beach

Years: 2013, 2014, 2013 **Species and Counts:** *Chelonia mydas*—1–25, 1–25, and 1–25 crawls, respectively; *Dermochelys coriacea*—26–100, 32, and 26–100 crawls, respectively; *Lepidochelys olivacea*—26–100, 45, and 26–100 crawls, respectively

SWOT Contacts: Adegbile Oyeronke Mojisola, Marc Gironot, and Alexandre Girard

SÃO TOMÉ AND PRÍNCIPE

DATA RECORD 70

Data Source: (1) ATM/MARAPA. *Tatô Program—Sea Turtle Conservation Project of the Island of São Tomé, Technical Report 2015/16*.

(2) MARAPA. 2017. Sea turtle nesting in São Tomé. Personal communication. In *SWOT Report—State of the World's Sea Turtles*, vol. XII (2017).

Nesting Beaches: Comprida; Giga; Inhome and Cabana (combined); Jalé; Malanza; Micoló, Tartaruga, and Fernão Dias (combined); Planta; Rolas (all beaches); São Miguel; Tamarindos and Governador (combined); Xixi; Crijá; Porto Alegre; Celeste (all in São Tomé)

Years: 2015, 2012 (*Dermochelys coriacea* at Comprida and Malanza) **Species and Counts:** *Chelonia mydas*—14, 1, 49, 829, 1, 13, 54, 36, N/A, 3, 26, 8, 49, and 6 crawls, respectively; *Dermochelys coriacea*—2, N/A, 2, 13, 1, 4, 1, N/A, N/A, 1, 2, 1, 1, and N/A crawls, respectively; *Eretmochelys imbricata*—2, N/A, 8, 17, 2, N/A, 5, 78, 1, 1, 1, 12, 7, and 5 crawls, respectively; *Lepidochelys olivacea*—2, N/A, N/A, 4, N/A, 249, 1, N/A, N/A, 202, N/A, N/A, N/A, and N/A crawls, respectively

SWOT Contacts: Sara Vieira, Hipólito Lima, Joana Hancock, and Betânia Ferreira

DATA RECORD 71

Data Source: Bollen, A., and Fundação Príncipe Trust. 2017. Sea turtle nesting in Príncipe. Personal communication. In *SWOT Report—State of the World's Sea Turtles*, vol. XII (2017).

Nesting Beaches: Ponta Marmita; Portinho; Praia Banana; Praia Boi; Praia Bom Bom; Praia Bumbo; Praia Burras; Praia Cabinda; Praia Cemitério; Praia Franguiña; Praia Grande; Praia Grande do Infante; Praia Lola; Praia Macaco;

Praia Margarida; Praia Micoto; Praia Montanha; Praia Popa; Praia Prainha; Praia Ribeira Ize; Praia Rio São Tome; Praia Santa Rita; Praia Seca; Praia Sundry; Praia Uba; Preda Furada (all on Príncipe Island)

Year: 2015 **Species and Counts:** *Chelonia mydas*—0, N/A, N/A, 45, 24, 1, 1, 31, 41, N/A, 683, 522, 4, 8, 0, 33, 1, N/A, 17, 1, 48, N/A, 90, 1, 9, and N/A clutches, respectively; *Dermochelys coriacea*—N/A, N/A, 1, 4, N/A, 1, N/A, N/A, 0, N/A, 2, 3, N/A, 4, N/A, 2, 1, N/A, N/A, N/A, 2, 1, N/A, N/A, and N/A clutches, respectively; *Eretmochelys imbricata*—4, 1, 8, 9, N/A, 2, N/A, 2, 6, 1, 9, 1, 1, 3, 1, 10, 2, 0, N/A, 1, N/A, 0, 6, 4, 10, and 1 clutches, respectively

SWOT Contact: An Bollen

SENEGAL

DATA RECORD 72

Data Source: Fretey, J. 2001. Biogeography and conservation of marine turtles of the Atlantic Coast of Africa. *CMS Technical Series*, no. 6. United Nations Environment Programme/Convention on the Conservation of Migratory Species of Wild Animals Secretariat, Bonn, Germany.

Nesting Beaches: Beaches near Guéréro; Beaches on the Saloum Delta; Langue de Barbarie

Species and Counts: *Chelonia mydas*—N/A, N/A, and unquantified clutches, respectively; *Eretmochelys imbricata*—unquantified, unquantified, and N/A clutches, respectively

SEYCHELLES, REPUBLIC OF

DATA RECORD 73

Data Source: Data from the Republic of Seychelles were submitted by Jeanne A. Mortimer of the Turtle Action Group of Seychelles and were based on studies conducted by the following stakeholders: Alphonse Foundation; Banyan Tree Hotel, Mahé; Beachcomber Sainte Anne Resort; Bird Island Lodge; Constance Lémuria Resort, Praslin; Cousine Island Company; Denis Private Island; Desroches Foundation, Farquhar Foundation; Fregate Island Private; Global Vision International Seychelles; Green Island Foundation; Island Conservation Society; Marine Conservation Society Seychelles; Nature Seychelles, North Island Seychelles; Save Our Seas Foundation/D'Arros Research Centre; Seychelles Islands Foundation; Seychelles Ministry of Environment, Energy and Climate Change; Seychelles National Parks Authority;

Silhouette Foundation; and WiseOceans.

Nesting Beaches: Inner Islands, including all islands on the Seychelles Bank (i.e., all the Granitic Islands, Bird Island, and Denis Island); Platte and Coëtivy islands; Amirante Islands (including all islands on the Amirantes Bank plus Desroches Island and the islands of the Alphonse Atoll and the St. François Atoll); Providence and Farquhar atolls; Cosmoledo and Astove atolls; Assumption Island and Aldabra Atoll

Year: 2015 **Species and Counts:** *Chelonia mydas*—101–500, 51–100, 1,001–5,000, 1,001–5,000, >10,000, and >10,000 clutches per year, respectively; *Eretmochelys imbricata*—1,000–5,000, 101–500, 1,000–5,000, 51–100, 51–100, and 51–100 clutches per year, respectively

SWOT Contact: Jeanne A. Mortimer

SIERRA LEONE

DATA RECORD 74

Data Source: Aruna, E. 2007. Loggerhead nesting in Sierra Leone. Personal communication. In *SWOT Report—State of the World's Sea Turtles*, vol. II (2007).

Nesting Beaches: Hamilton and Lumley **Year:** 2007 **Species and Counts:** *Caretta caretta*—0 and unquantified clutches, respectively; *ermochelys coriacea*—0 and unquantified clutches, respectively; *Lepidochelys coriacea*—unquantified clutches at both sites

SWOT Contact: Edward Aruna

DATA RECORD 75

Data Source: Siaffa, D. D., E. Aruna, and J. Fretey. 2003. Presence of sea turtles in Sierra Leone (West Africa). In J. A. Seminoff (ed.), *Proceedings of the Twenty-Second Annual Symposium on Sea Turtle Biology and Conservation*. NOAA Technical Memorandum NMFS-SEFSC-503. Miami, FL: NOAA.

Nesting Beaches: Bakí; Sherbro **Year:** 2007 **Species and Counts:** *Lepidochelys coriacea*—unquantified clutches at both sites

SOUTH AFRICA

DATA RECORD 76

Data Source: Nel, R. 2016. *Turtle Monitoring and Research Report: 2013/14 and 2014/15 Seasons*. Unpublished report.

Nesting Beaches: Kosi Mouth to Sodwana; Mabibi to Sodwana

Years: 2013, 2014 **Species and Counts:** *Caretta caretta*—3,828 and 3,890 clutches, respectively; *Dermochelys coriacea*—353 and 414 clutches, respectively

TANZANIA

DATA RECORD 77

Data Source: Joynson Hicks, C., and L. West. 2017. Sea turtle nesting in Tanzania. Personal communication. In *SWOT Report—State of the World's Sea Turtles*, vol. XII (2017).

Nesting Beaches: Amani Gomvu; Baleni; Boza; Buyuni; Buyuni Kuu; Bweni; Choba; Gezaulole; Jiwe la Mzungu; Jojo; Kikokwe; Kimbiji; Kipumbwi; Kishiko Kikubwa; Kungwi; Kuruti; Madete; Manda; Maziwe Island; Mbutu; Mchuni; Mkwaja; Mlongo; Mnemba Island; Mvinjeni; Pemba Mnazi; Sange; Shungimbili; Stahabu; Ushongo; Wimbi; Yale Yale Puna; Yuyuni

Years: 2015, 2015, 2013, 2015, 2008, 2015, 2015, 2011, 2015, 2015, 2015, 2015, 2012, 2015, 2015, 2013, 2015, 2012, 2015, 2015, 2015, 2011, 2015, 2015, 2015, 2015, 2015, 2010, 2014, 2015, 2014, 2015, and 2015, respectively **Species and Counts:** *Chelonia mydas*—59, 3, 1, 12, 2, 3, 16, 3, 31, 9, 21, 20, 1, 88, 13, 1, 0, 10, 68, 15, 15, 3, 8, unquantified, 36, 2, 7, 3, 1, 7, 1, 12, and 24 clutches, respectively; *Eretmochelys imbricata*—N/A, N/A, N/A, N/A, N/A, N/A, N/A, 2, 1, N/A, N/A, N/A, N/A, 2, N/A, N/A, 2, N/A, N/A, 3, N/A, 1, N/A, N/A, N/A, 6, N/A, N/A, 4, N/A, and N/A, and 2 clutches, respectively

SWOT Contacts: Catharine Joynson Hicks and Lindsey West

TOGO

DATA RECORD 78

Data Source: Hoinsoude, G. S., J. E. Bowessidjaou, G. A. Kokouvi, F. Iroko, and J. Fretey. 2002. Plan for sea turtle conservation in Togo. In J. A. Seminoff (ed.), *Proceedings of the Twenty-Second Symposium on Sea Turtle Biology and Conservation*. NOAA Technical Memorandum NMFS-SEFSC-503. Miami, FL: NOAA.

Nesting Beaches: Togo **Year:** 2002 **Species and Counts:** *Lepidochelys olivacea*—unquantified

DATA RECORD 79

Data Source: Segniagbeto, G. H. 2006. Leatherback nesting in Togo. Personal communication. In *SWOT Report—State of the World's Sea Turtles*, vol. I (2006). **Nesting Beaches:** Agbodrako; Gbétsoygbé; Kodjoviakope; Kotokoucondji; N'Lessi; Palm **Year:** 2003 **Species and Counts:** *Dermochelys coriacea*—19, 1, 4, 1, 4, and 1 nesting females, respectively

SWOT Contact: Gabriel Hoinsoude Segniagbeto

Telemetry Data Sources

The following data records refer to satellite telemetry datasets from tags that were deployed in Africa and the southwest Indian Ocean and were combined to create the map on pages 26–27. These data were generously provided to SWOT by the people and partners listed subsequently. As the data were mapped, obviously erroneous points (e.g., on land) were filtered. Some datasets were filtered before being shared with SWOT and were not filtered further. The map is for illustrative purposes and should not be considered an authoritative source of tracking data for the studies cited. Records that have a SWOT ID can be viewed in detail in the SWOT online database and mapping application at <http://seamap.env.duke.edu/swot>, which contains additional information about the projects and their methodologies.

To save space, the following abbreviations are used in the data source fields below: (1) “STAT” refers to Coyne, M. S., and B. J. Godley. 2005. Satellite Tracking and Analysis Tool (STAT): An integrated system for archiving, analyzing and mapping animal tracking data. *Marine Ecology Progress Series* 301: 1–7. (2) “SWOT Online Database” refers to Kot, C. Y., E. Fujioka, A. DiMatteo, B. Wallace, B. Hutchinson, J. Cleary, P. Halpin, and R. Mast. 2015. The State of the World's Sea Turtles Online Database: Data provided by the SWOT Team and hosted on OBIS-SEAMAP. Oceanic Society, IUCN Marine Turtle Specialist Group (MTSG), and Marine Geospatial Ecology Lab, Duke University. <http://seamap.env.duke.edu/swot>. When listed, these sources indicate that the dataset was contributed online through STAT or SWOT.

Project Title: TAG Satellite—Tracked Green Sea Turtles from Seychelles 2012 under Southwest Indian Ocean Fisheries Project (SWIOFP)

Project Partners: TAG, Ifremer, Kélonia, and D'Arros Research Centre

Metadata: 4 adult *Chelonia mydas*; tags deployed in Seychelles.

Data Sources: (1) Mortimer, J. 2012. *Satellite Tracking of Post-nesting Green Turtles (Chelonia mydas) from St. Joseph Island, Amirantes Group, Seychelles*. Field Report to SWIOFP C5. (2) Bourjea, J., J. A. Mortimer, J. Garnier, G. Okemwa, B. J. Godley, G. Hughes, M. Dalleau, C. Jean, S. Ciccione, and D. Muths. 2015. Population structure enhances perspectives on regional management of the Western Indian Ocean green turtle. *Conservation Genetics* 16(5): 1069–83.

SWOT Contact: Jeanne Mortimer

Project Title: Post-nesting Migration of Adult Green Turtles from Moya (Mayotte) under SWIOFP, 2011–2012

Project Partners: Crucial Aquifer Recharge Area (CARA) Ecology, Direction de l'Environnement de l'Aménagement et du Logement de Mayotte, Conseil Départemental de Mayotte, Ifremer, and Kélonia **Metadata:** 12 adult *Chelonia mydas*; tags deployed in Mayotte.

Data Sources: Dalleau, M. 2013. *Ecologie spatiale des tortues marines dans le Sud-ouest de l'Océan Indien: Apport de la géomatique et de la modélisation pour la conservation*. PhD thesis, University of La Réunion.

SWOT Contacts: Katia Ballorain and Mayeul Dalleau

Project Title: Post-nesting Migration of Adult Green Turtles from Itsamia (Mohéli, Comoros)

Project Partners: ADSEI, Parc National de Mohéli, and Kélonia **Metadata:** 13 adult *Chelonia mydas*; tags deployed in Mohéli, Comoros.

Data Sources: Dalleau, M., and J. Bossert. *Programme opérationnel de coopération territoriale (Océan Indien): Actions de coopération entre le CEDTM (Réunion, France) et Mohéli (Union des Comores) pour la conservation de l'environnement marin—Rapport final*.

SWOT Contact: Mayeul Dalleau

Project Title: DYMITLE Project: Post-nesting Migration of Adult Green Turtles in the Southwest Indian Ocean (Éparses Islands, Mohéli)

Project Partners: Ifremer and Kélonia **Metadata:** 51 adult *Chelonia mydas*; tags deployed in Éparses Islands (France) and Mohéli, Comoros.

Data Sources: (1) Bourjea, J., S. Ciccione, and M. Dalleau. 2013. DYMITLE—Dynamique Migratoire des Tortues marines nidifiant dans les ILEs françaises de l'Océan Indien. Ifremer, France. <http://doi.org/10.13155/28050> (2) Dalleau, M. 2013. *Ecologie spatiale des tortues marines dans le Sud-ouest de l'Océan Indien: Apport de la géomatique et de la modélisation pour la conservation*. PhD thesis, University of La Réunion.

SWOT Contacts: Jérôme Bourjea and Mayeul Dalleau

Project Title: Leatherback Turtles of South Africa

Project Partners: The Leatherback Trust, Purdue University, Nelson Mandela Metropolitan University, KZN Wildlife, iSimangaliso Wetland Park Authority, and Oceans and Coasts **Metadata:** 20 adult female *Dermochelys coriacea*; tags deployed in South Africa.

Data Sources: Robinson, N. J., S. J. Morreale, R. Nel, and F. V. Paladino. 2016. Coastal leatherback turtles reveal conservation hotspot. *Scientific Reports* 6: 37851.

SWOT Contact: Nathan Robinson

SWOT ID: 1448

Project Title: Angola LNG Olive Ridley Tracking Project

Project Partners: West Australian Sea Turtle Satellite Tracking Project **Metadata:** 10 adult female *Lepidochelys olivacea*; tags deployed in Angola.

Data Sources: (1) Pendoley, K. 2016. Angola LNG Olive Ridley Tracking Project. Data downloaded from OBIS-SEAMAP

(<http://seamap.env.duke.edu/dataset/1448>) on 2/12/2017, originated from STAT (http://www.seaturtle.org/tracking/index.shtml?project_id=263). (2) STAT. (3) SWOT Online Database. **SWOT Contact:** Kellie Pendoley

SWOT ID: 1452

Project Title: Gabon 2007–08: Mayumba, Leatherback Turtles
Project Partners: Parc National de Mayumba, Wildlife Conservation Society, Aventures Sans Frontières, Seaturtle.org, and University of Exeter

Metadata: 7 adult female *Dermochelys coriacea*; tags deployed in Mayumba National Park, Gabon.

Data Sources: (1) Witt, M., A. C. Broderick, M. S. Coyne, A. Formia, S. Ngouessono, R. J. Parnell, G. P. Sounguet, and B. J. Godley. 2008. Satellite tracking highlights difficulties in the design of effective protected areas for critically endangered leatherback turtles *Dermochelys coriacea* during the inter-nesting period. *Oryx* 42(2): 296–300. (2) Witt, M. 2016. Gabon 2007–08: Mayumba, Leatherback Turtles. Data downloaded from OBIS-SEAMAP (<http://seamap.env.duke.edu/dataset/1452>) on 2/12/2017, originated from STAT (http://www.seaturtle.org/tracking/index.shtml?project_id=270). (3) STAT. (4) SWOT Online Database. **SWOT Contact:** Matthew Witt

SWOT ID: 1454

Project Title: Gabon 2008–09: Mayumba and Pongara, Leatherback Turtles

Project Partners: Parc National de Mayumba, Wildlife Conservation Society, the Gabon Turtle Partnership, Aventures Sans Frontières, Seaturtle.org, and University of Exeter

Metadata: 10 adult female *Dermochelys coriacea*; tags deployed in Pongara National Park (n = 6) and Mayumba National Park (n = 4), Gabon.

Data Sources: (1) Witt, M. J., E. A. Bonguno, A. C. Broderick, M. S. Coyne, A. Formia, A. Gibudi, G. A. M. Mounquengui, A. Moussounda, M. NSafou, S. Nougessono, R. J. Parnell, G. P. Sounguet, S. Verhage, and B. J. Godley. 2011. Tracking leatherback turtles from the world's largest rookery: Assessing threats across the South Atlantic. *Proceedings of the Royal Society B* 278: 2338–2347. (2) Witt, M. 2016. Gabon 2008–09: Mayumba and Pongara, Leatherback Turtles. Data downloaded from OBIS-SEAMAP (<http://seamap.env.duke.edu/dataset/1454>) on 2/12/2017, originated from STAT (http://www.seaturtle.org/tracking/index.shtml?project_id=340). (3) STAT. (4) SWOT Online Database. **SWOT Contact:** Matthew Witt

SWOT ID: 1456

Project Title: Gabon 2009–10: Pongara, Leatherback Turtles

Project Partners: University of Exeter, Seaturtle.org, the Gabon Sea Turtle Partnership, Parc Gabon, and Wildlife Conservation Society

Metadata: 2 adult female *Dermochelys coriacea*; tags deployed in Pongara National Park, Gabon.

Data Sources: (1) Witt, M. J., E. A. Bonguno, A. C. Broderick, M. S. Coyne, A. Formia, A. Gibudi, G. A. M. Mounquengui, A. Moussounda, M. NSafou, S. Nougessono, R. J. Parnell, G. P. Sounguet, S. Verhage, and B. J. Godley. 2011. Tracking leatherback turtles from the world's largest rookery: Assessing threats across the South Atlantic. *Proceedings of the Royal Society B* 278: 2338–2347. (2) Witt, M. 2016. Gabon 2009–10: Pongara, Leatherback Turtles. Data downloaded from OBIS-SEAMAP (<http://seamap.env.duke.edu/dataset/1456>) on 2/12/2017, originated from STAT (http://www.seaturtle.org/tracking/index.shtml?project_id=466). (3) STAT. (4) SWOT Online Database. **SWOT Contact:** Matthew Witt

Project Title: Juvenile loggerheads (1999–2000) tagged in the Canary Islands

Project Partners: Universidad de Las Palmas de Gran Canaria and Sociedad Herpetológica Española

Metadata: 5 juvenile *Caretta caretta*; tags deployed in the Canary Islands.

Data Sources: Universidad de Las Palmas de Gran Canaria and Sociedad Herpetológica Española. 2017. Program number 01602: Proyecto Life B4-3200/97/247 de apoyo a la conservación del delfín mular (*Tursiops truncatus*) y la tortuga común (*Caretta caretta*) en Canarias. Personal communication. In *SWOT Report—State of the World's Sea Turtles*, vol. XII (2017). **SWOT Contact:** Nuria Varo-Cruz

Project Title: Cousin Island Post-nesting Hawksbills

Metadata: 5 adult female *Eretmochelys imbricata*; tags deployed in Seychelles, postnesting.

Data Sources: Mortimer, J. A., and G. H. Balazs. 1999. Post-nesting migrations of hawksbill turtles in the Granitic Seychelles and implications for conservation. 19th Annual Sea Turtle Symposium, South Padre Island, TX. **SWOT Contact:** Jeanne Mortimer

Project Title: Movements of Late Juvenile Loggerhead Sea Turtles from Réunion Island (COCA LOCA Project)

Project Partners: Kélonia and Ifremer

Metadata: 22 adult *Caretta caretta*; tags deployed in La Réunion (France).
Data Sources: Dalleau, M., L. Hoarau, M. Lalire, P. Gaspar, C. Tardy, S. Jaquemet, J. Bossert, S. Ciccione, and J. Bourjea. 2016. *COCA LOCA: Connectivity of Loggerhead Turtle (Caretta caretta) in Western Indian Ocean: Implementation of Local and Regional Management*. Final Report.

SWOT Contacts: Mayeul Dalleau and Jérôme Bourjea

SWOT ID: 439

Project Title: Leatherback Tracking in South Africa

Metadata: 9 *Dermochelys coriacea*; tags deployed in South Africa.

Data Sources: (1) Luschi, P., J. R. E. Lutjeharms, P. Lambardi, R. Mencacci, G. R. Hughes, and C. G. Hays. 2006. A review of migratory behaviour of sea turtles off southeastern Africa. *South African Journal of Science* 102: 51–58. (2) Luschi, P., A. Sale, R. Mencacci, G. R. Hughes, J. R. E. Lutjeharms, and F. Papi. 2003. Current transport of leatherback sea turtles (*Dermochelys coriacea*) in the ocean. *Proceedings of the Royal Society B: Biological Sciences* 270 (suppl. 2): 129–132. (3) Lambardi, P., J. R. E. Lutjeharms, R. Mencacci, C. G. Hays, and P. Luschi. 2008. Influence of ocean currents on long-distance movement of leatherback sea turtles in the Southwest Indian Ocean. *Marine Ecology Progress Series* 353: 289–301. **SWOT Contact:** Paolo Luschi

SWOT ID: 496

Project Title: Canary Islands—OAG (Observatorio Ambiental Granadilla)

Project Partners: Observatorio Ambiental Granadilla, Sociedad para el Estudio de Cetáceos en el Archipiélago Canario, Centro de Gestión de Biodiversidad del Departamento de Biología de la Universidad de Las Palmas de Gran Canaria, Centro de Recuperación de Fauna Silvestre del Cabildo Insular de Gran Canaria

Metadata: 19 juvenile *Caretta caretta*; tags deployed in Canary Islands.
Data Sources: (1) Machado, A., V. Martín, L. F. López-Jurado, and P. Calabuig. 2016. Canary Islands—OAG. Data downloaded from OBIS-SEAMAP (<http://seamap.env.duke.edu/dataset/496>) on 2/12/2017, originated from STAT (http://www.seaturtle.org/tracking/index.shtml?project_id=315). (2) STAT. (3) SWOT Online Database. **SWOT Contact:** Antonio Machado

SWOT ID: 1003

Project Title: Movement Patterns of Nesting Green Turtles in Tanzania

Project Partners: Sea Sense

Metadata: 4 adult *Chelonia mydas*; tags deployed in Tanzania.

Data Sources: (1) West, L. 2016. Movement patterns of nesting green turtles in Tanzania. Data downloaded from OBIS-SEAMAP (<http://seamap.env.duke.edu/dataset/1003>) on 2/12/2017, originated from STAT (http://www.seaturtle.org/tracking/index.shtml?project_id=918). (2) STAT. (3) SWOT Online Database. **SWOT Contact:** Lindsey West

SWOT ID: 1014

Project Title: Ifremer/Kélonia Satellite-Tracked Late Juvenile Loggerhead Sea Turtles from Réunion Island, 2008–2012

Project Partners: Ifremer, CLS, and Kélonia

Metadata: 17 juvenile *Caretta caretta*; tags deployed in La Réunion (France).

Data Source: Dalleau, M., B. Simon, J. Sudre, S. Ciccione, and J. Bourjea. 2014. The spatial ecology of juvenile loggerhead turtles (*Caretta caretta*) in the Indian Ocean sheds light on the “lost years” mystery. *Marine Biology* 161(8): 1835–1849.

SWOT Contacts: Mayeul Dalleau and Jérôme Bourjea

SWOT ID: 1024

Project Title: Maluane/Zoological Society of London (ZSL) Turtle Conservation Project in Mozambique: Green Turtles

Project Partners: Marine Turtle Research Group of University of Exeter, ZSL, and Maluane

Metadata: 8 *Chelonia mydas*; tags deployed in Mozambique.

Data Sources: (1) Maluane and ZSL Turtle Conservation Project. 2016. Maluane/ZSL Turtle Conservation Project in Mozambique: Green Turtles. Data downloaded from OBIS-SEAMAP (<http://seamap.env.duke.edu/dataset/1024>) on 2/12/2017, originated from STAT (http://www.seaturtle.org/tracking/index.shtml?project_id=204). (2) Garnier, J., N. Hill, A. Guissamulo, I. Silva, A. Debney, and B. Godley. 2012. Status and community-based conservation of marine turtles in the northern Querimbas (Mozambique). *Oryx* 46(3): 359–367. (3) STAT. (4) SWOT Online Database.

SWOT Contacts: Julie Garnier and Jérôme Bourjea

SWOT ID: 1118

Project Title: AICM Satellite-Tracked Loggerhead Sea Turtles from Mozambique, 2012, under SWIOFP

Project Partners: Associação para Investigação Costeira e Marinha (AICM), Ifremer, and Kélonia

Metadata: 3 adult female *Caretta caretta*; tags deployed in Mozambique.

Data Sources: (1) Pereira, M. A. M., E. J. S. Videira, P. M. B. Gonçalves, and R. S. Fernandes. 2014. Post-nesting migration of loggerhead turtles (*Caretta caretta*) from Southern Mozambique. *African Sea Turtle Newsletter* 1: 48–51. (2) Videira, E., M. Dalleau, J. Bourjea, and M. Pereira. 2015. AICM satellite-tracked loggerhead sea turtles from Mozambique, 2012, under SWIOFP. Data downloaded from OBIS-SEAMAP (<http://seamap.env.duke.edu/dataset/1118>) on 2/12/2017. (3) SWOT Online Database. **SWOT Contact:** Eduardo Videira, Mayeul Dalleau, Jérôme Bourjea, and Marcos Pereira

SWOT ID: 1120

Project Title: University of Eldoret Satellite-Tracked Green Sea Turtles from Kenya, 2012, under SWIOFP

Project Partners: World Wildlife Fund Kenya, University of Eldoret, Kenya, Ifremer, and Kélonia

Metadata: 3 adult female *Chelonia mydas*; tags deployed in Kenya.

Data Sources: (1) Machaku, R., M. Dalleau, and J. Bourjea. 2014. University of Eldoret satellite-tracked green sea turtles from Kenya, 2012, under SWIOFP. Data downloaded from OBIS-SEAMAP (<http://seamap.env.duke.edu/dataset/1120>) on 2/12/2017. (2) SWOT Online Database.

SWOT Contacts: Mike Olendo, Rose Machaku, Mayeul Dalleau, and Jérôme Bourjea

SWOT ID: 1170

Project Title: La Tortuga Verde en las Islas Canarias/Green Turtles in the Canary Islands

Project Partners: Asociación para el Desarrollo Sostenible y Conservación de la Biodiversidad, Departamento de Biología de la Universidad de Las Palmas de Gran Canaria, Centro de Recuperación de Fauna Silvestre del Cabildo de Gran Canaria, Centro de Recuperación de Fauna Silvestre de la Tahonilla del Cabildo de Tenerife

Metadata: 3 *Chelonia mydas*; tags deployed in Canary Islands

Data Sources: (1) Liria, A. 2016. La tortuga verde en las islas Canarias/Green turtles in the Canary Islands. Data downloaded from OBIS-SEAMAP (<http://seamap.env.duke.edu/dataset/1170>) on 12/19/2016, originated from STAT (http://www.seaturtle.org/tracking/index.shtml?project_id=988). (2) STAT. (3) SWOT Online Database.

SWOT Contact: Ana Liria

SWOT ID: 1215

Project Title: Gabon 2014: Olive Ridley Sea Turtles

Project Partners: Gabon National Parks Agency; CENAREST (Centre National de la Recherche Scientifique et Technologique); Gabon Sea Turtle Partnership; Fondation Liambissi; Ibonga; Wildlife Conservation Society; World Wildlife Foundation; Stanford University; University of California, Santa Cruz; Marine Conservation Institute, and the Marine Turtle Research Group at the University of Exeter

Metadata: 6 adult *Lepidochelys olivacea*; tags deployed in Gabon.

Data Sources: (1) Maxwell, S. 2016. Gabon 2014: Olive Ridley Sea Turtles. Data downloaded from OBIS-SEAMAP (<http://seamap.env.duke.edu/dataset/1215>) on 2/12/2017, originated from STAT (http://www.seaturtle.org/tracking/index.shtml?project_id=1047). (2) STAT. (3) SWOT Online Database. **SWOT Contact:** Sara Maxwell

SWOT ID: 1328

Project Title: Gabon Olive Ridley Tracking Project: Pongara National Park, 2015

Project Partners: Gabon National Parks Agency, CENAREST (Centre National de la Recherche Scientifique et Technologique), Gabon Sea Turtle Partnership, Old Dominion University, Wildlife Conservation Society Gabon, and the Marine Turtle Research Group at the University of Exeter

Metadata: 10 adult *Lepidochelys olivacea*; tags deployed in Gabon.

Data Sources: (1) Maxwell, S. 2016. Gabon Olive Ridley Tracking Project: Pongara National Park, 2016. Data downloaded from OBIS-SEAMAP (<http://seamap.env.duke.edu/dataset/1328>) on 2/12/2017, originated from STAT (http://www.seaturtle.org/tracking/index.shtml?project_id=1165). (2) STAT. (3) SWOT Online Database. **SWOT Contact:** Sara Maxwell

SWOT ID: 1444

Project Title: Canary Islands

Project Partners: LIFE *Caretta caretta*

Metadata: 9 juvenile *Caretta caretta*; tags deployed in Canary Islands.

Data Sources: (1) Cruz, N. 2016. Canary Islands. Data downloaded from OBIS-SEAMAP (<http://seamap.env.duke.edu/dataset/1444>) on 2/12/2017, originated from STAT (http://www.seaturtle.org/tracking/index.shtml?project_id=886). (2) STAT. (3) SWOT Online Database. **SWOT Contact:** Nuria Cruz

SWOT ID: 1459

Project Title: Ghana Olive Ridley Project

Project Partners: Seaturtle.org; Florida Gulf Coast University; Ilimhi Association for Turtle Conservation and Hope (HAICH); University of Ghana; and Ghana Wildlife Division, Forestry Commission

Metadata: 4 adult *Lepidochelys olivacea*; tags deployed in Ghana.

Data Sources: (1) Coyne, M. 2017. Ghana Olive Ridley Project. Data downloaded from OBIS-SEAMAP (<http://seamap.env.duke.edu/dataset/1459>) on 2/12/2017, originated from STAT (http://www.seaturtle.org/tracking/index.shtml?project_id=468). (2) STAT. (3) SWOT Online Database. **SWOT Contacts:** Michael Coyne and Phil Allman

Project Title: Post-nesting Leatherback and Loggerhead Turtles in South Africa

Metadata: 14 adult female *Dermochelys coriacea* and 20 adult female *Caretta caretta*; tags deployed in South Africa.

Data Source: Harris, L. R., N. Nel, H. Oosthuizen, M. Meyer, D. Kotze, D. Anders, S. McCue, and S. Bachoo. 2015. Paper-efficient multi-species conservation and management are not always field-effective: The status and future of West Indian Ocean leatherbacks. *Biological Conservation* 191: 383–390.

SWOT Contact: Ronel Nel and Linda Harris

Project Title: Mahé Seychelles Hawksbill Project

Project Partners: Marine Conservation Society Seychelles, Marine Unit of the Ministry of Environment (Seychelles), local schools, and the Wildlife Clubs of Seychelles

Metadata: 4 adult *Eretmochelys imbricata*; tags deployed in Mahé, Seychelles.

Data Source: Rowat, D. 2017. Mahé Seychelles Hawksbill Project. Personal communication. In *SWOT Report—State of the World's Sea Turtles*, vol. XII (2017).

SWOT Contact: David Rowat